



空壓式離合器 | 制動器 安全夾頭系列



目錄

BST型 空油轉換增壓器



第 1 頁

DBM型 油壓蝶式制動器



第 2~4 頁

安全夾頭



第 5~15 頁

NAB型 空壓通軸式制動器



第 16~19 頁

NAC型 空壓通軸式離合器



第 20~23 頁

PC型 油壓制動器



第 24~25 頁

POB型 微型磁粉制動器



第 26~27 頁

POC型 微型磁粉離合器



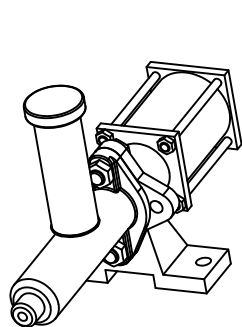
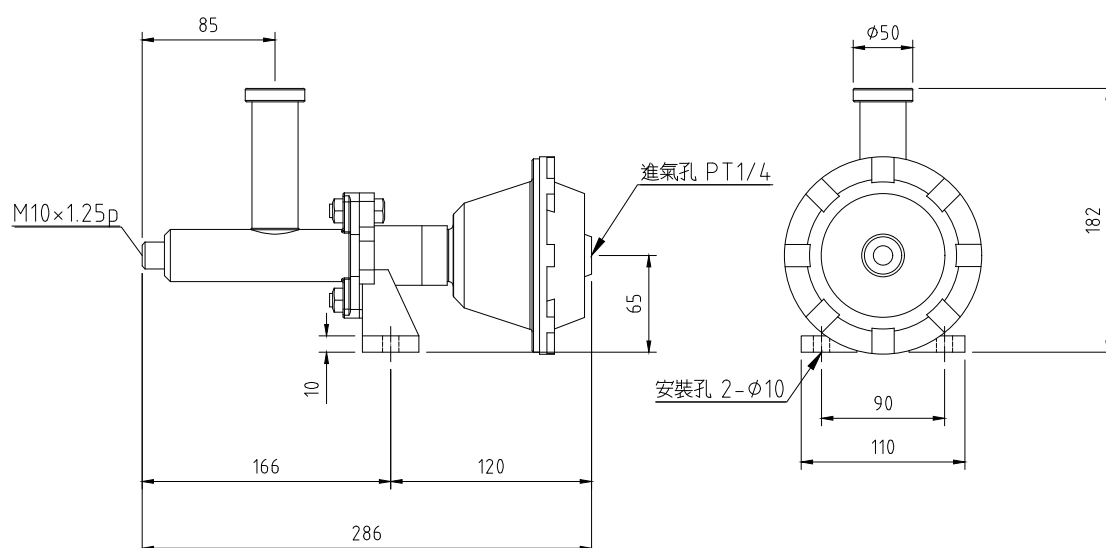
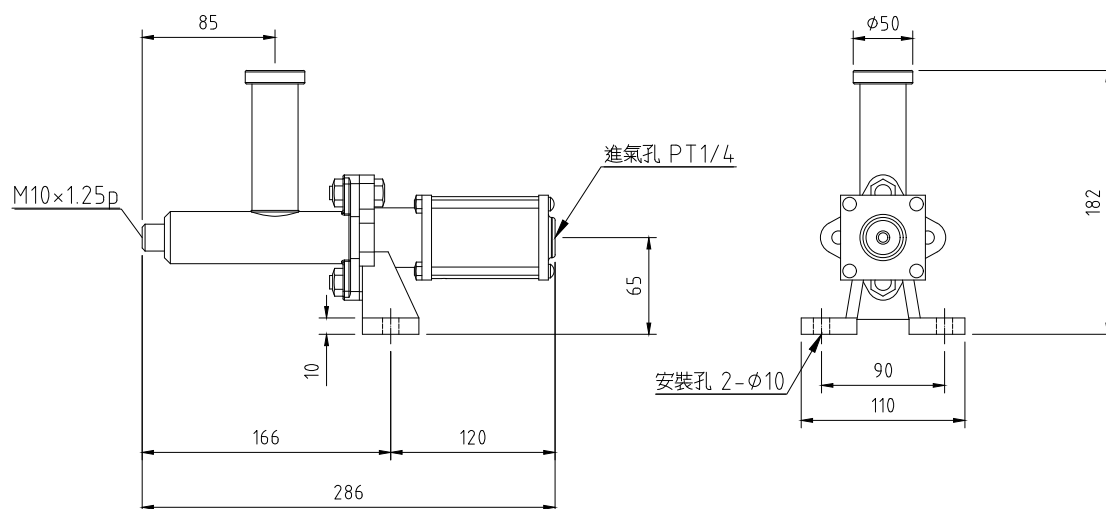
第 28~29 頁

DBF型 空壓制動器

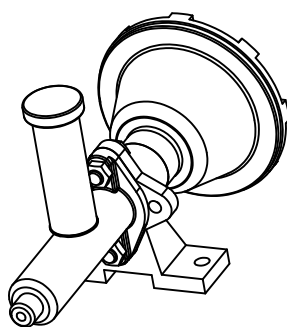


第 30 頁

空油轉換增壓器 BST



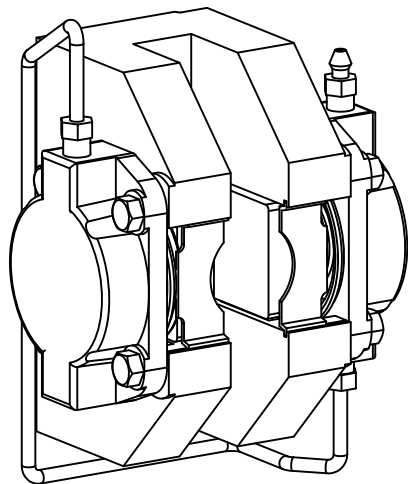
BST-2



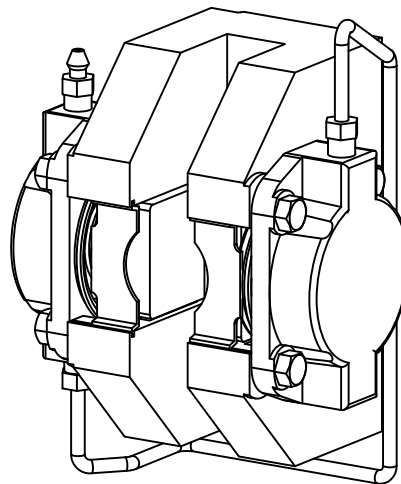
BST-4

BST 規格表		
型號	BST-2	BST-4
最大壓力	0.6 MPa	0.6 MPa
增壓比	7	14
產生油量	9 c.c	12 c.c
重量	1.6 kg	2.5 kg
Air Hydraulic Booster		

液壓碟式煞車器 DBM



R-type



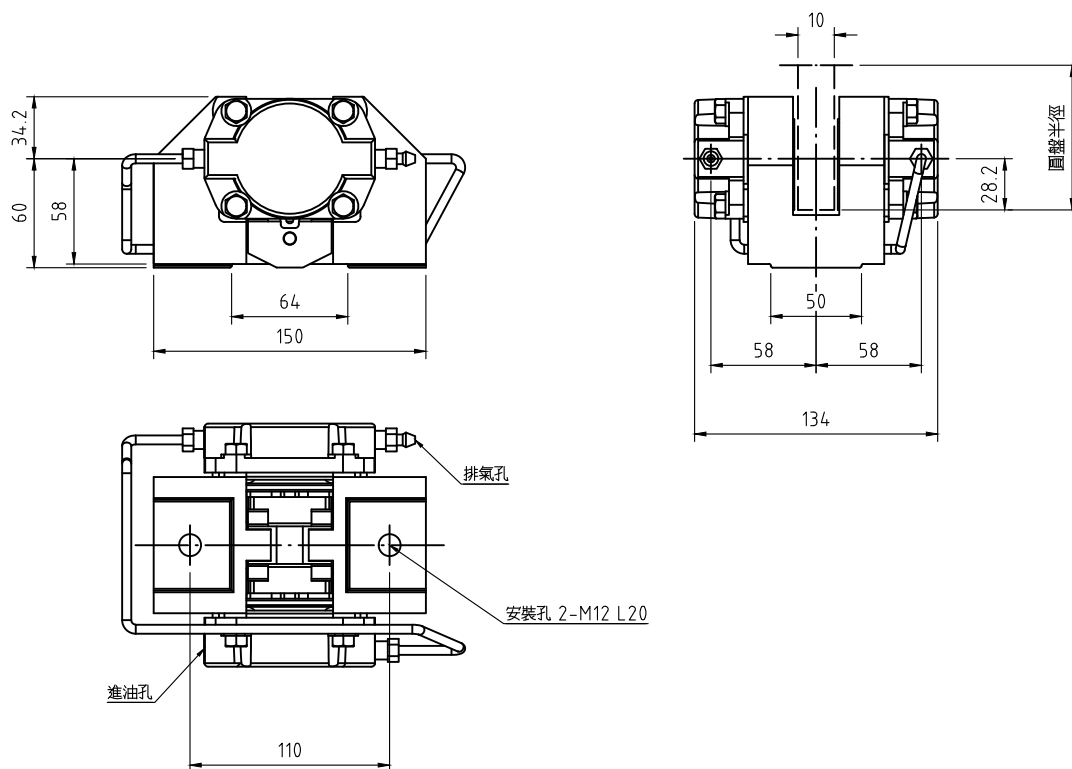
L-type

DBM				
型 號	DBM-L10	DBM-R10	DBM-L20	DBM-R20
煞車盤厚度	10 mm	10 mm	20 mm	20 mm
煞車盤直徑	200 mm or more	200 mm or more	200 mm or more	200 mm or more
最大壓力	5 MPa	5 MPa	5 MPa	5 MPa
汽缸面積	22.9 cm ²	22.9 cm ²	22.9 cm ²	22.9 cm ²
摩擦係數	0.3	0.3	0.3	0.3
煞車油類型	DOT3/DOT4	DOT3/DOT4	DOT3/DOT4	DOT3/DOT4
油量	2.5 c.c	2.5 c.c	2.5 c.c	2.5 c.c
重量	4.5 kg	4.5 kg	5.5 kg	5.5 kg

DBM尺寸圖

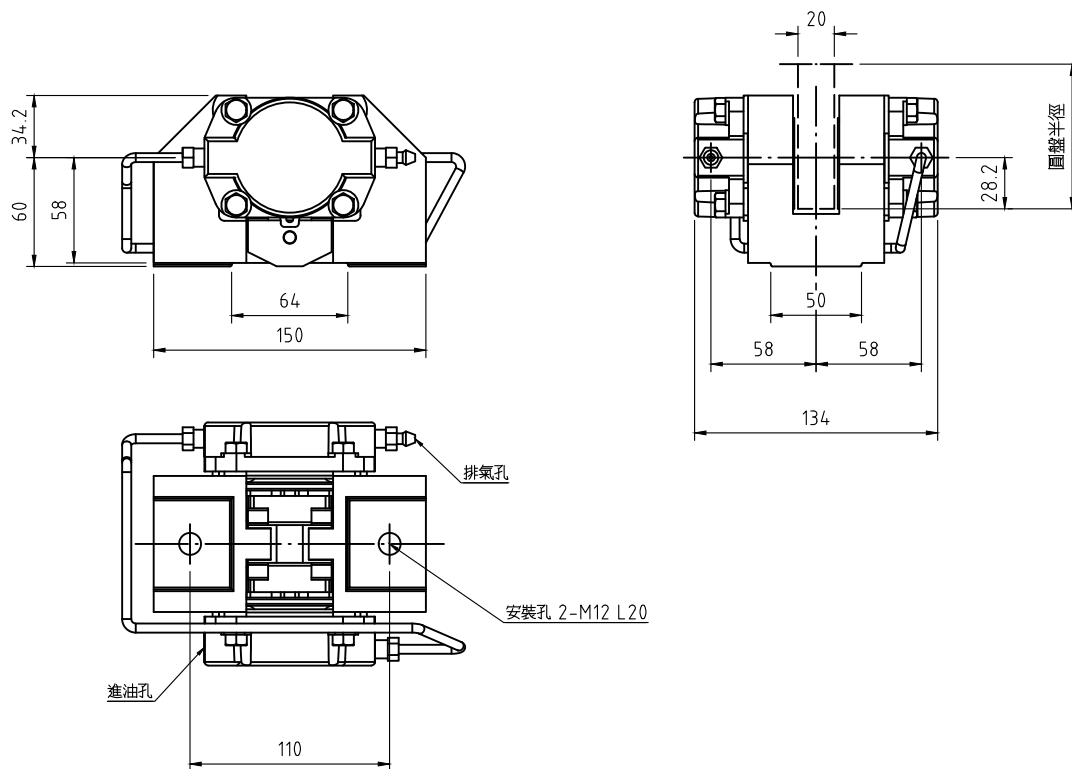
DBM-L10 / DBM-R10

(圖示為 DBM-R10)



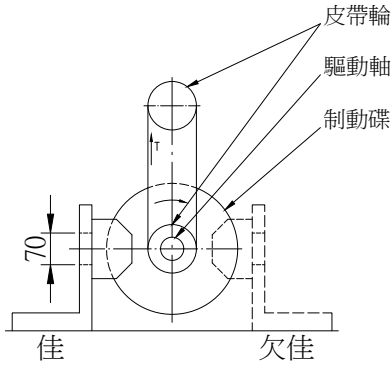
DBM-L20 / DBM-R20

(圖示為 DBM-R20)

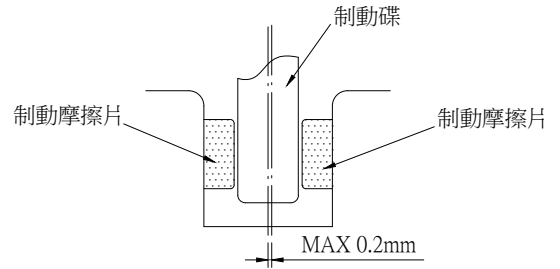


空油壓蝶式制動器設計與安裝及使用時注意事項

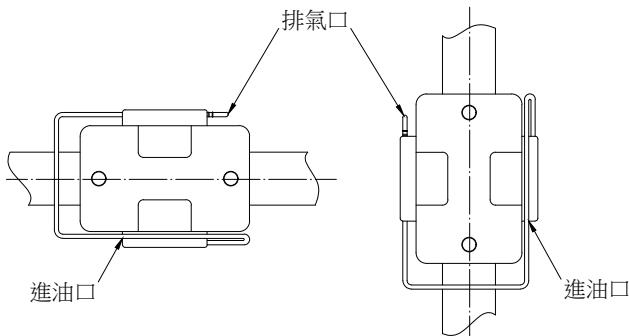
1. 裝置制動器之位置, 徑可能使制動力和驅動力對軸平衡



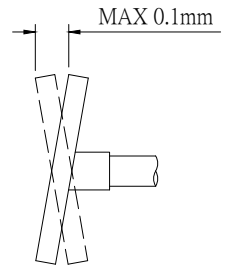
7. 制動盤應置於制動夾頭之中心位置, 偏差須小於0.2mm



2. 制動器之排氣口應位於制動本體之上, 以利於空氣排出



8. 制動蝶盤之振幅應控制在0.1mm之內



使用注意事項

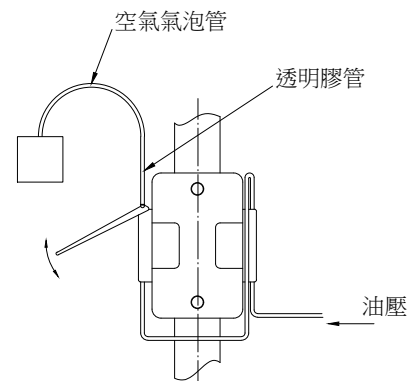
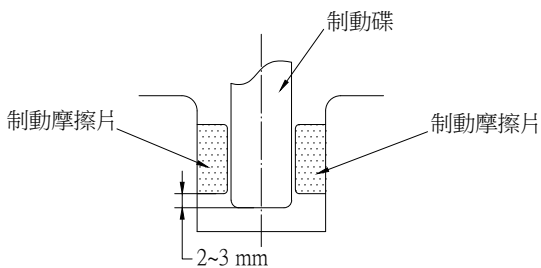
1. 本產品應使用 DOT3 或 DOT4 以上之制動油, 嚴禁使用其他礦物油或溶劑。
2. 制動於使用前, 應先將制動本體中之空氣完全排除。
(安裝時, 排氣口確實安裝在上方)
 - A. 先放鬆排氣口螺栓, 並套上透明膠管。
 - B. 油壓以小壓力作動(避免制動油快速進入), 直到至凍由充滿油壓缸, 並流至透明膠管, 確定管內無氣泡產生為止。
 - C. 然後鎖緊排氣螺栓, 抽掉透明膠管。

3. 增壓器或油壓源之位置, 應高於制動器, 並且距離制動器越近越好。

4. 制動器固定端應預留空間約 70mm X 70mm 以利於摩擦片自內側抽出更換。

5. 應避免密封式之設計, 使空氣之流通順暢, 制動碟盤有更佳之散熱效果。

6. 摩擦片應與制動盤全部接觸。

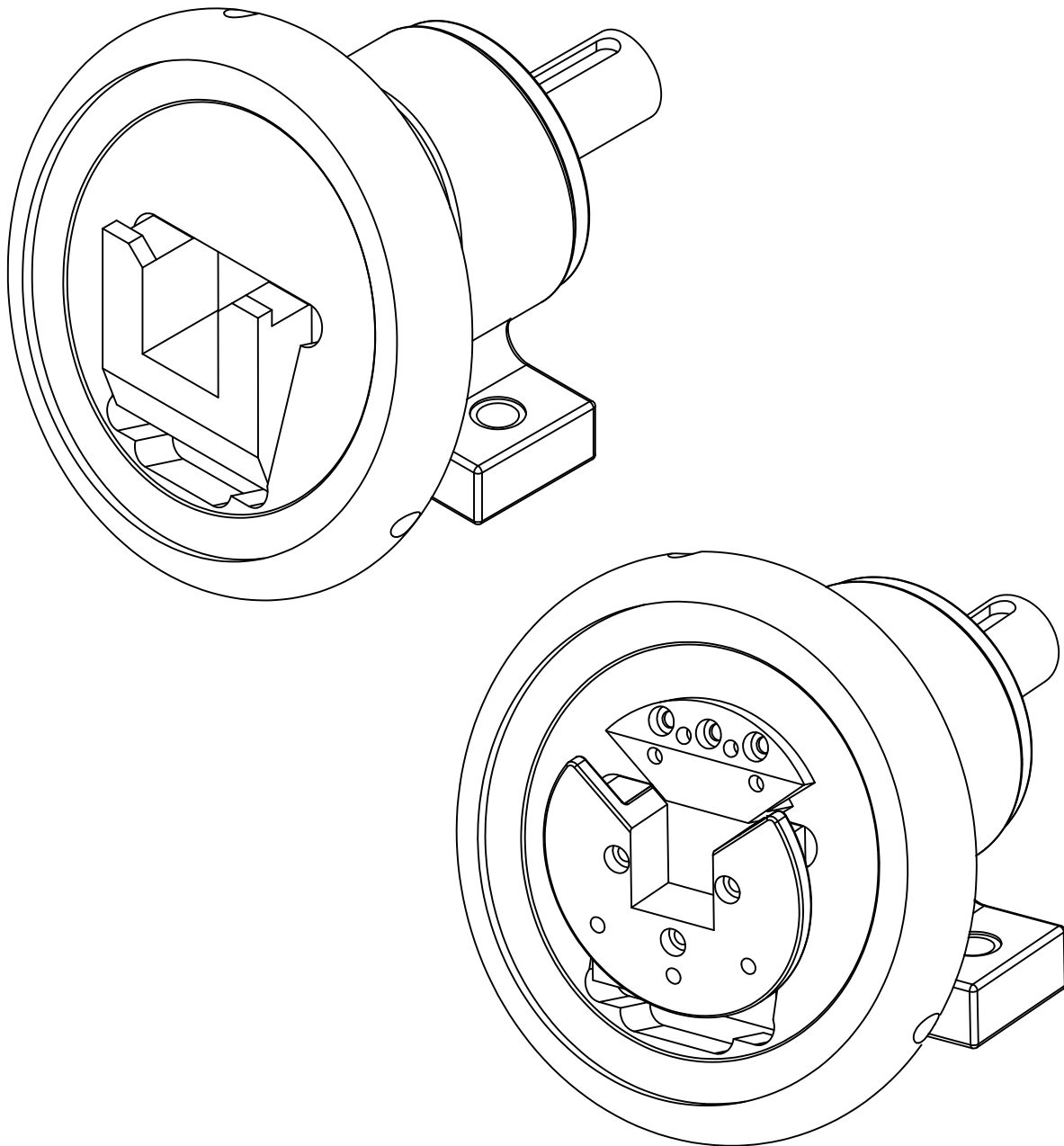


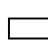



3. 制動液應隨時保持足夠之油量, 不可混合其他礦物油使用, 並定期更換。

4. 制動液對一般油漆具溶解性, 沾上制動液之後油漆表應立即擦拭乾淨。

5. 制動摩擦片磨耗至厚度剩下 10mm 時, 應即刻更換, 以免影響制動效果。

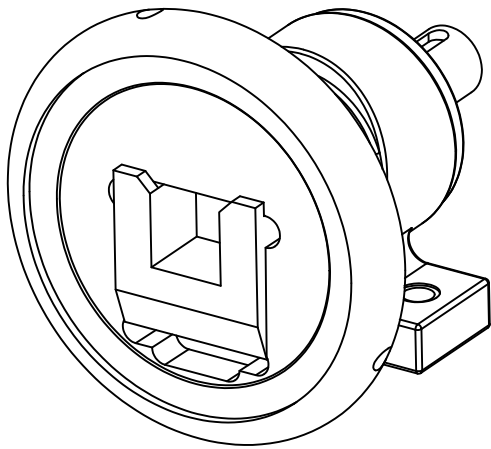
小組安全夾頭 22-30



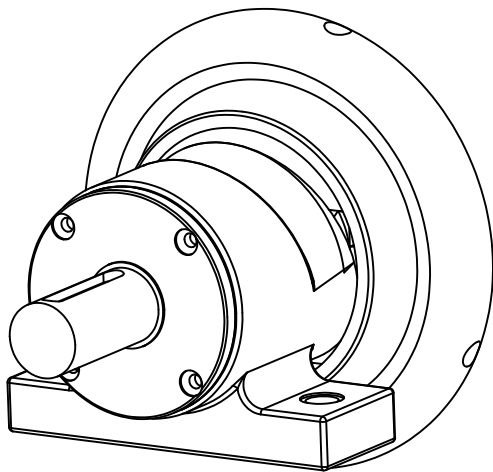
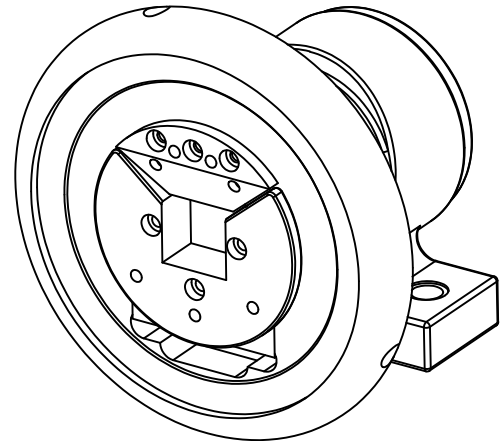
最大荷重 :  荷重 800 kg 
方口尺寸 :  22mm-30mm
承受最大轉矩 :  180Nm

小組腳座安全夾頭 22-30

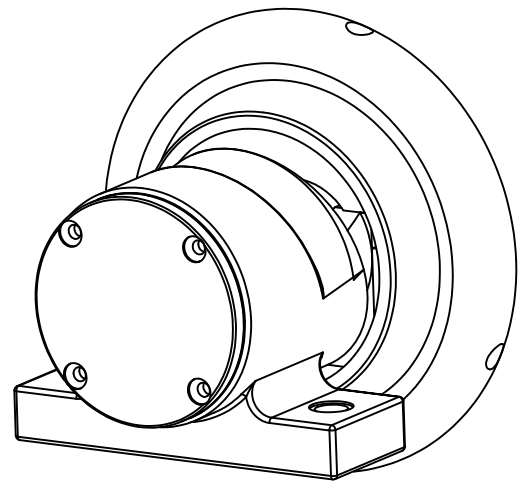
22-30 type C



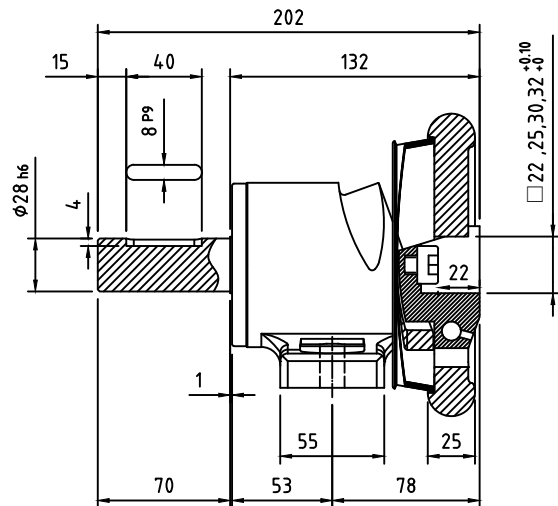
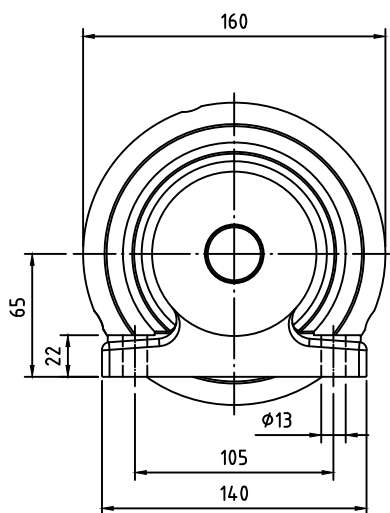
22-30 type VT



STW 22-30
長軸端

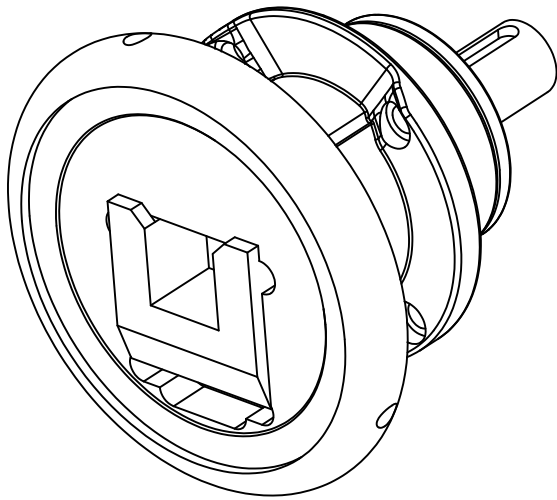


STO 22-30
短軸端

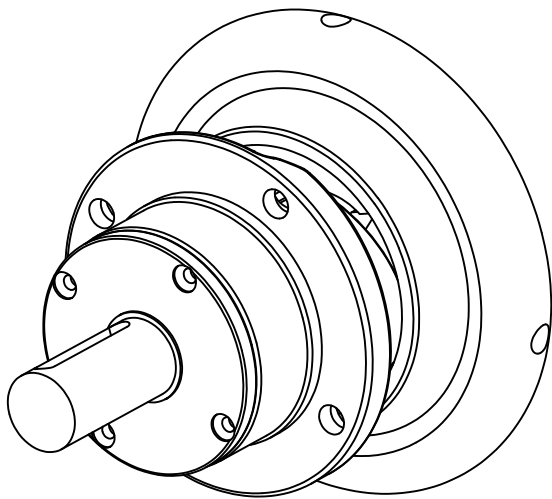
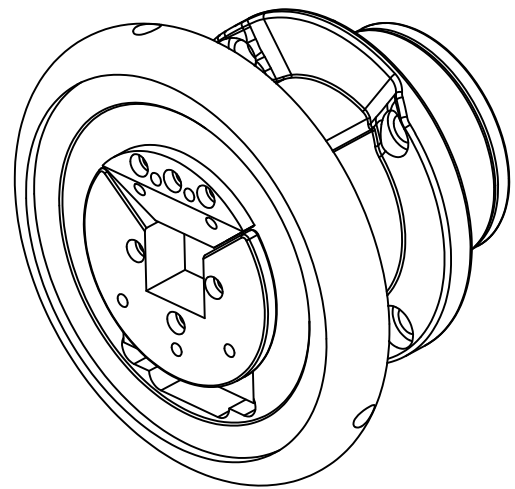


小組法蘭安全夾頭 22-30

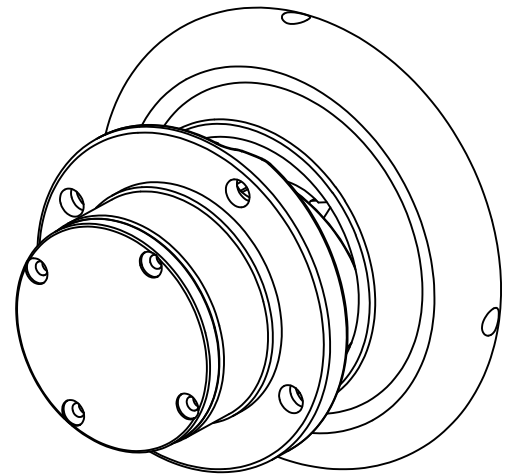
22-30 type C



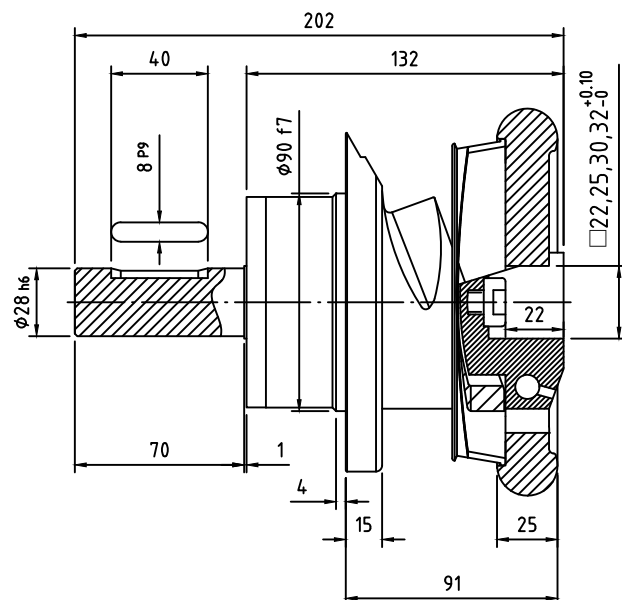
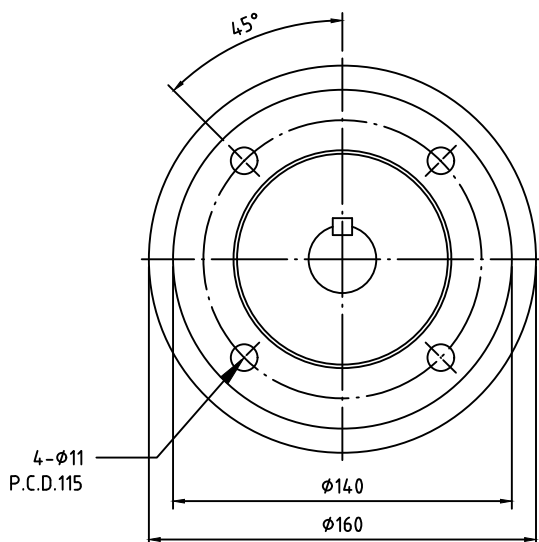
22-30 type VT



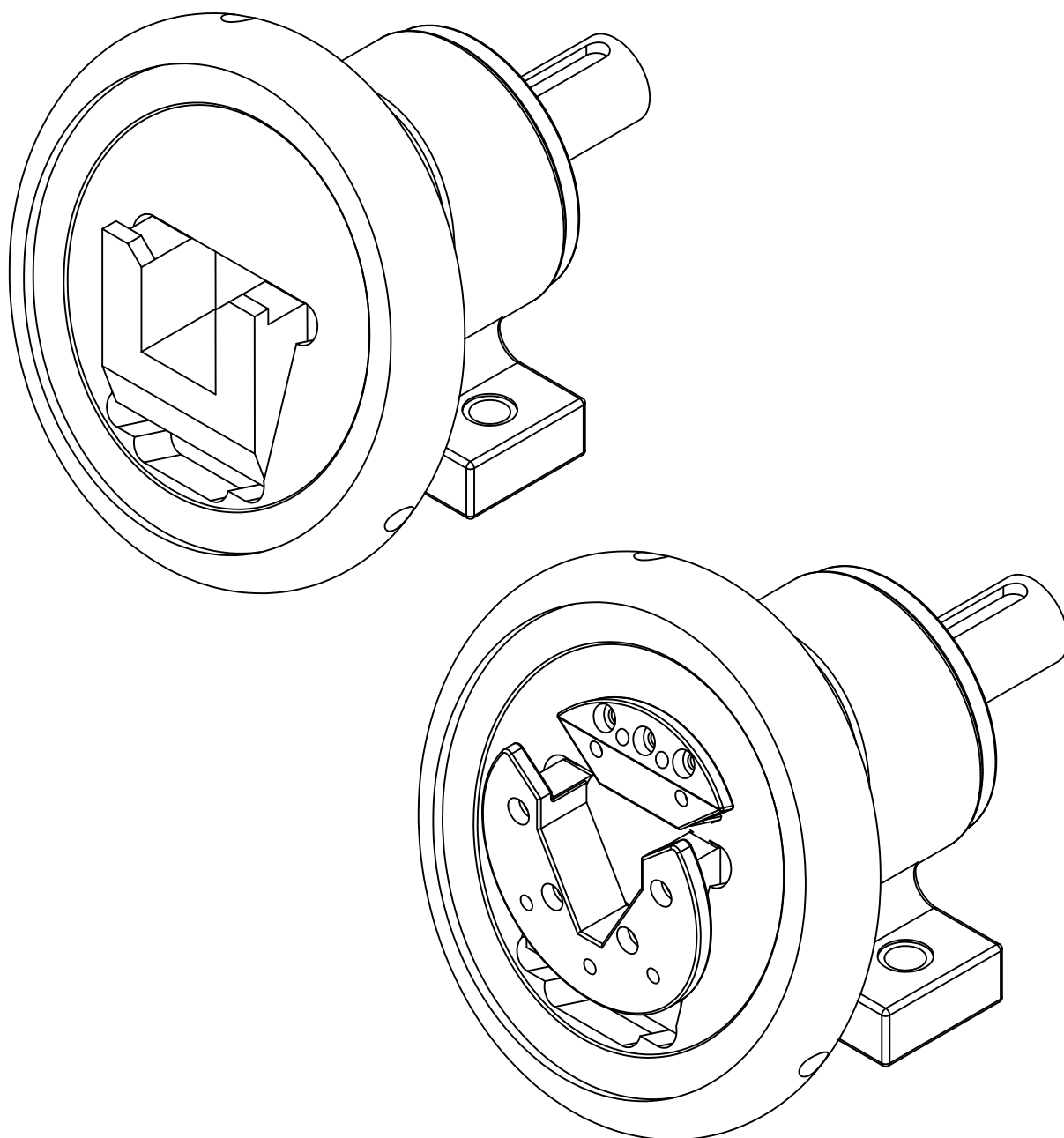
FLW 22-30
長軸端



FLO 22-30
短軸端



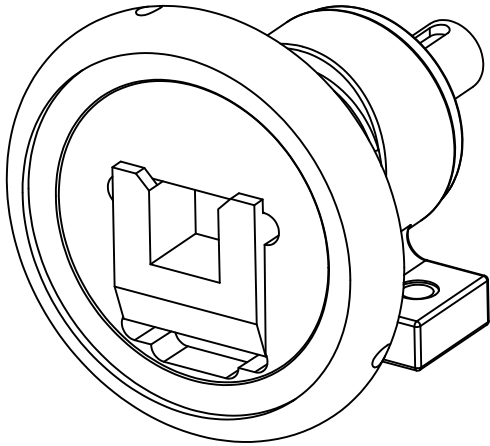
中組安全夾頭 30-40



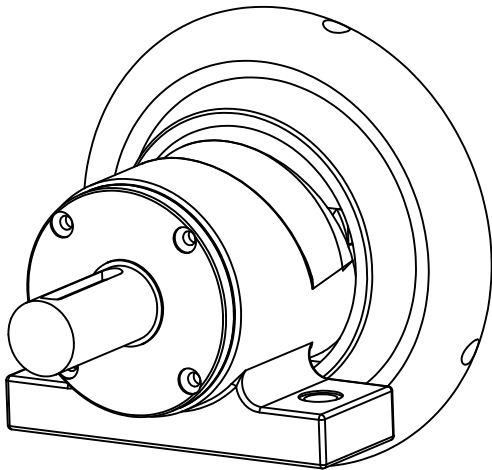
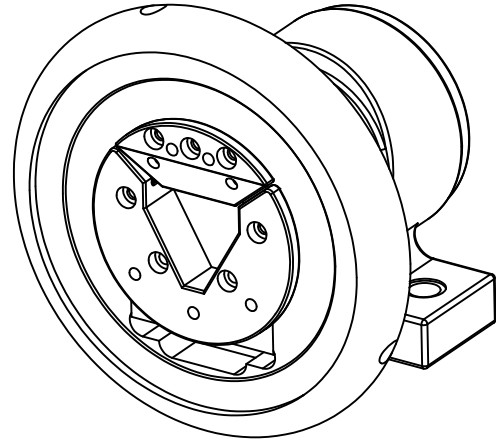
最大荷重 : □ 荷重 1600 kg
方口尺寸 : □ 30mm-40mm
承受最大轉矩 : ○ 350Nm

中組腳座安全夾頭 30-40

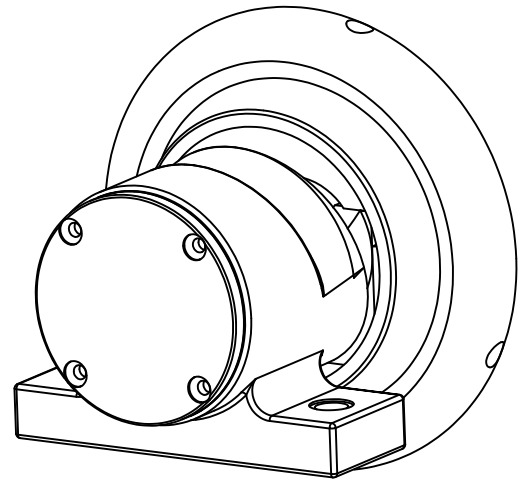
30-40 type C



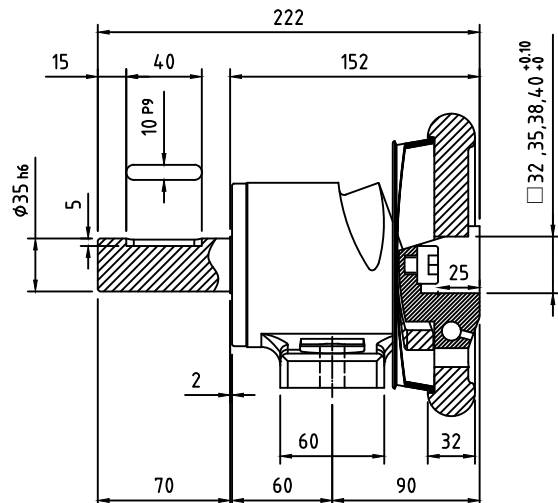
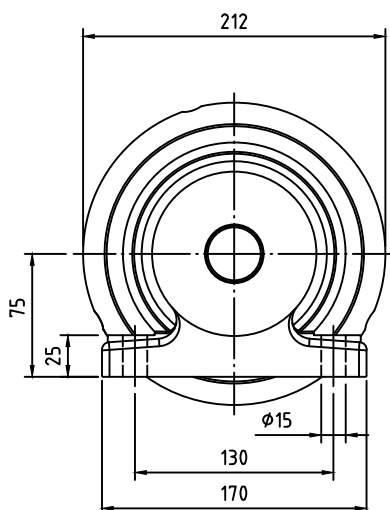
30-40 type VT



STW 30-40
長軸端

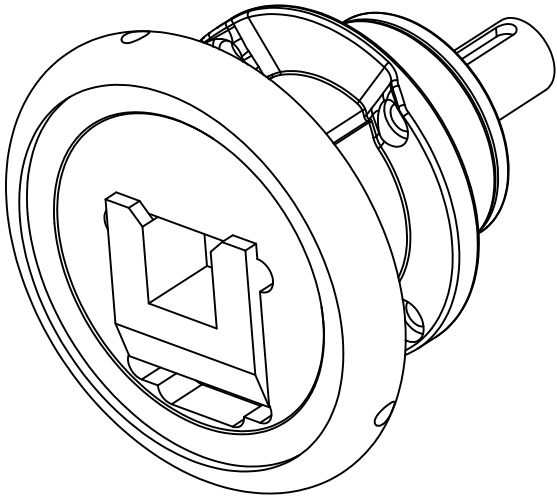


STO 30-40
短軸端

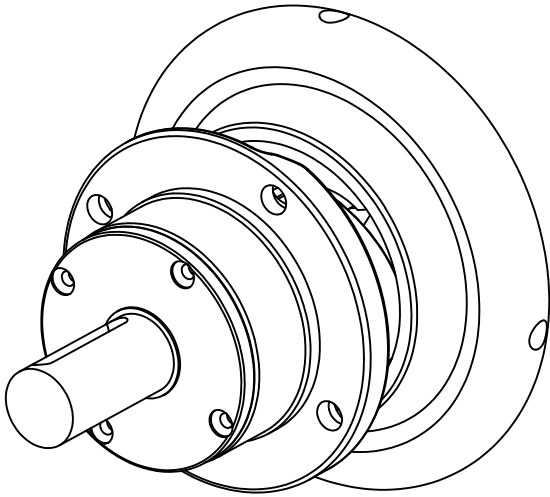
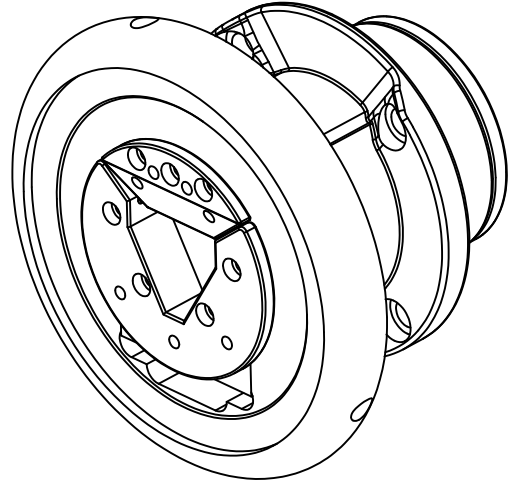


中組法蘭安全夾頭 30-40

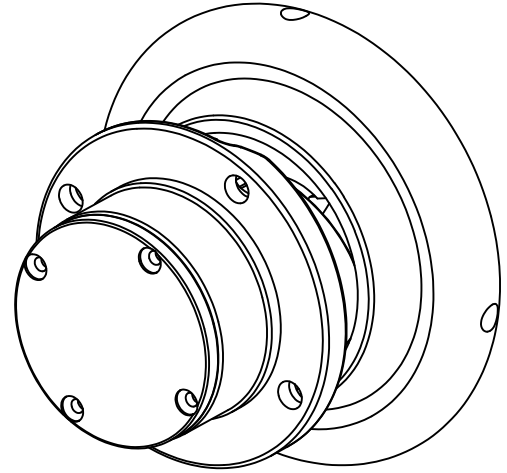
30-40 type C



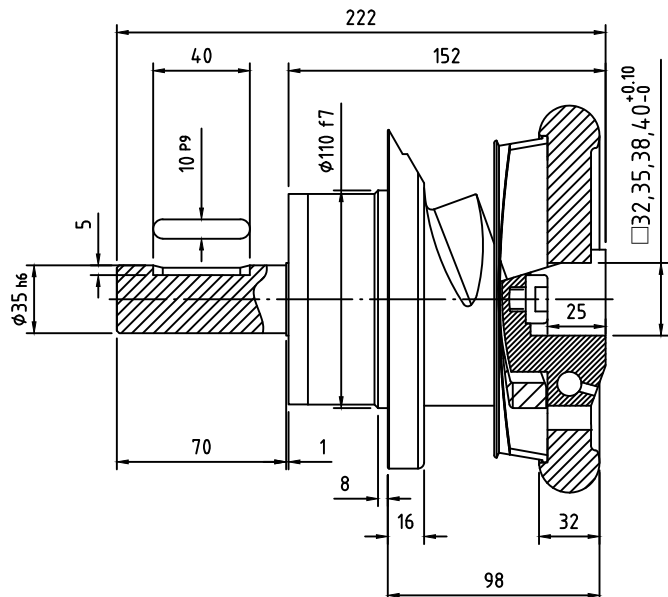
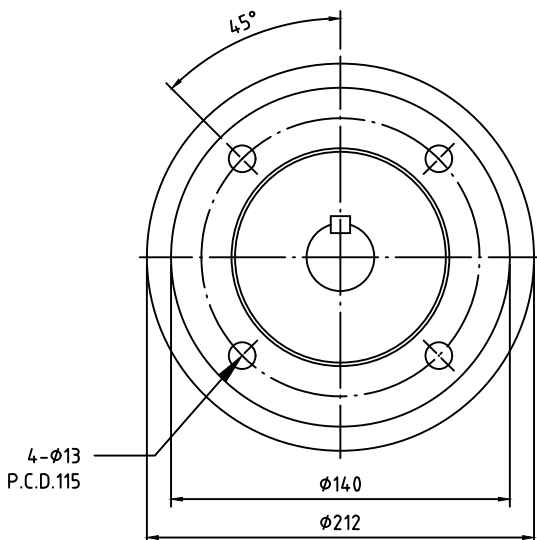
30-40 type VT



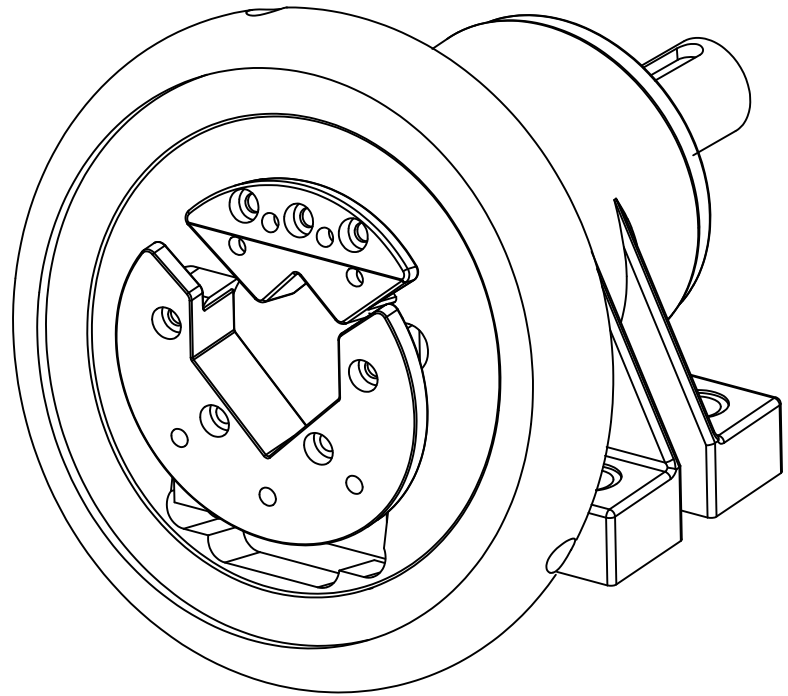
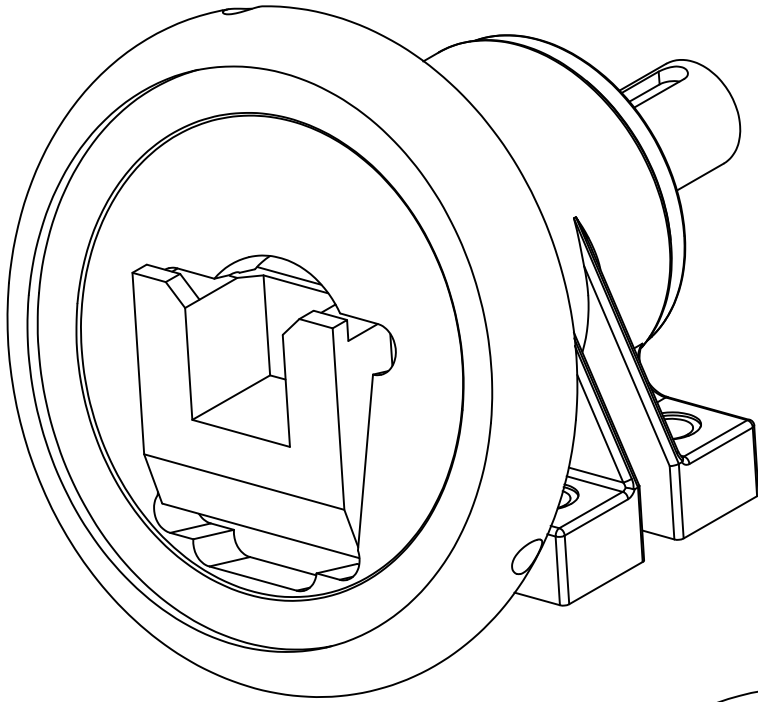
FLW 30-40
長軸端

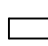






FLO 30-40
短軸端



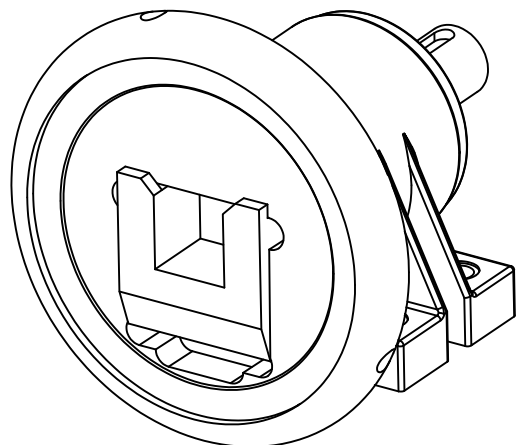
大組安全夾頭 40-50



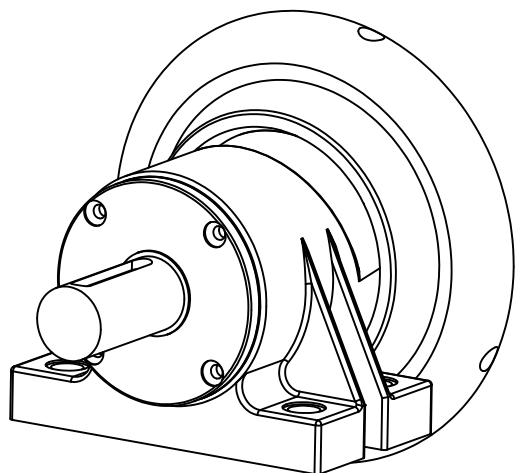
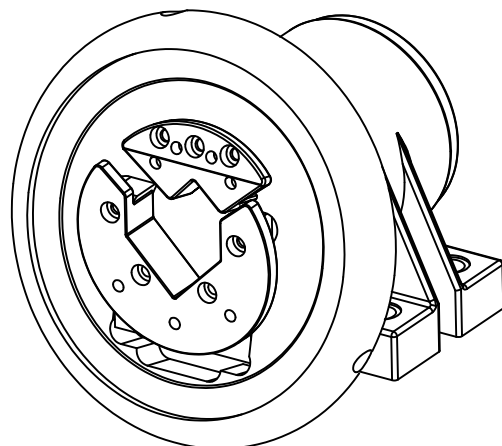
最大荷重 :  荷重 2800 kg 
方口尺寸 :  40mm-50mm 
承受最大轉矩 :  1100Nm

大組腳座安全夾頭 40-50

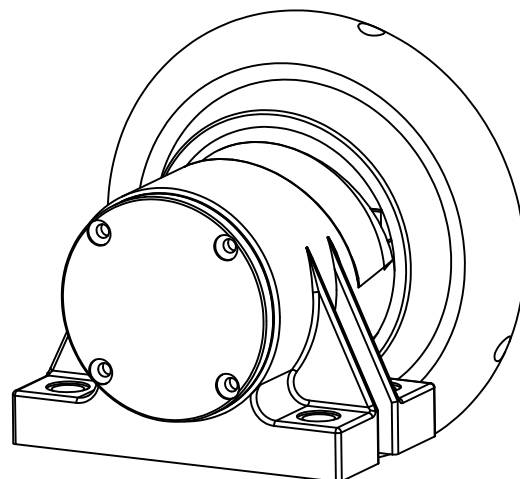
40-50 type C



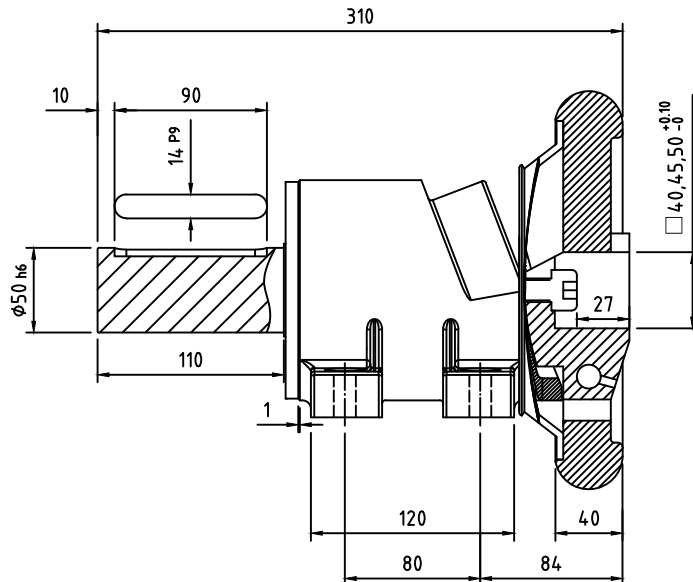
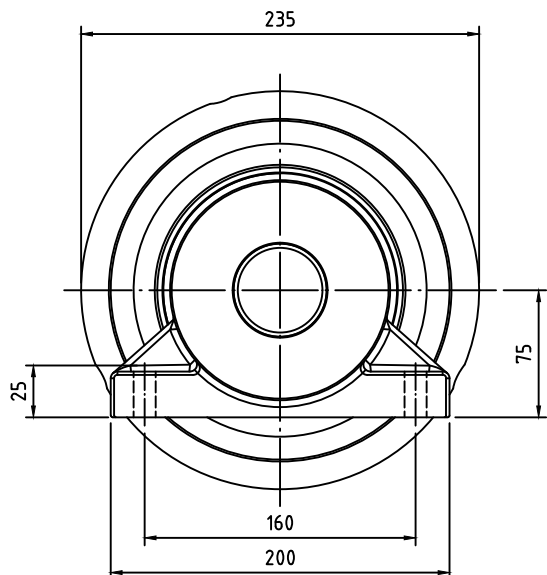
40-50 type VT



STW 40-50
長軸端

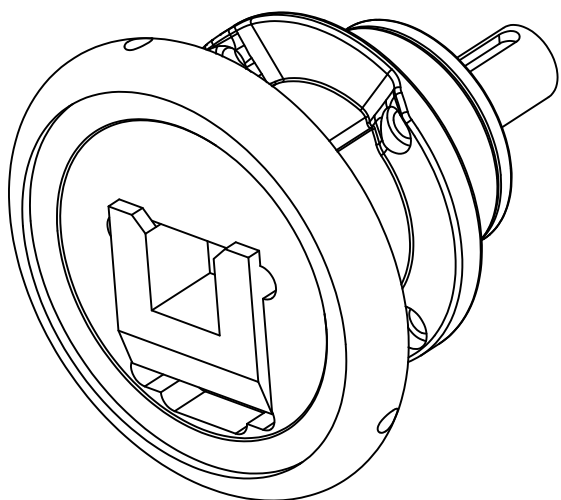


STO 40-50
短軸端

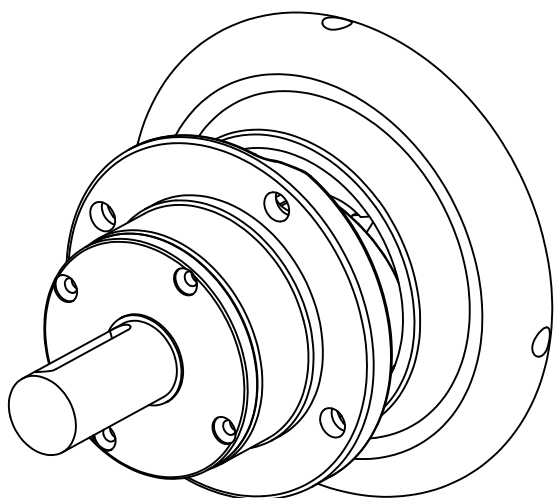
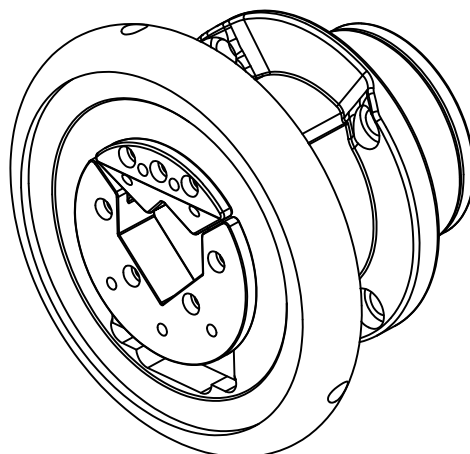


大組法蘭安全夾頭 40-50

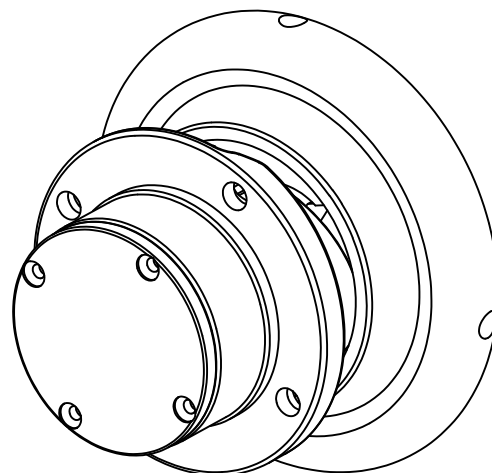
40-50 type C



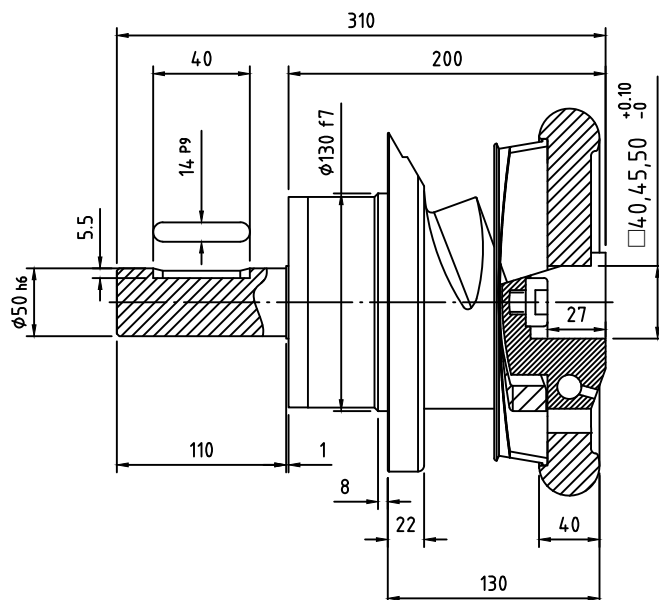
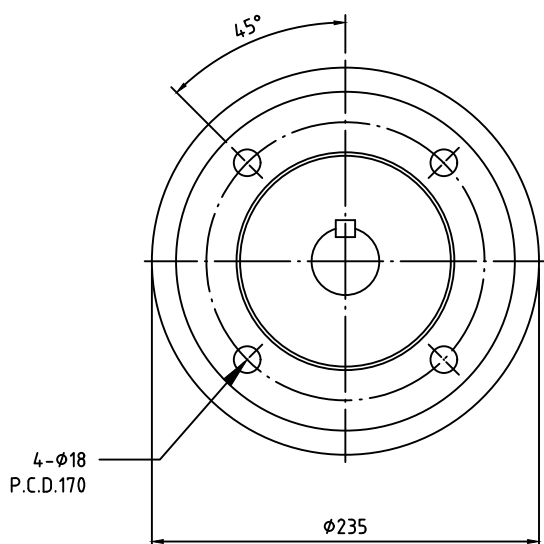
40-50 type VT



FLW 40-50
長軸端

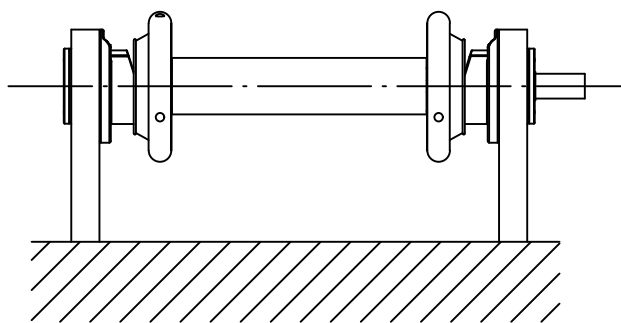
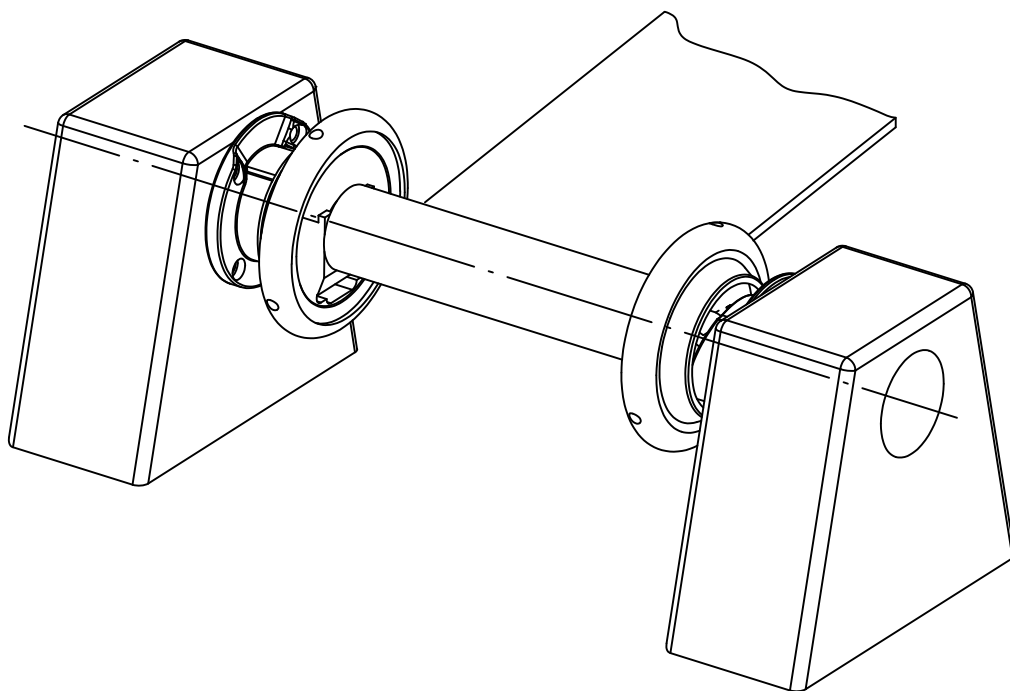


FLO 40-50
短軸端

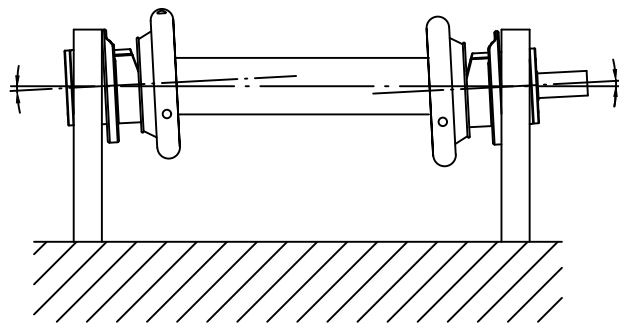


安全夾頭

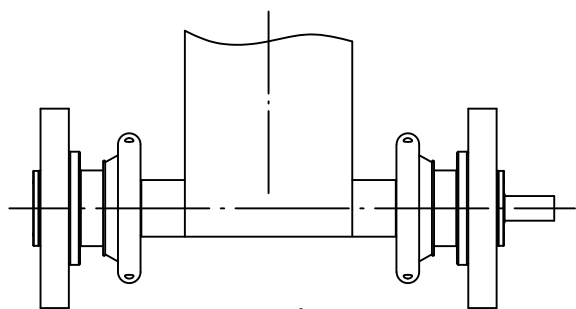
安全夾頭安裝注意事項



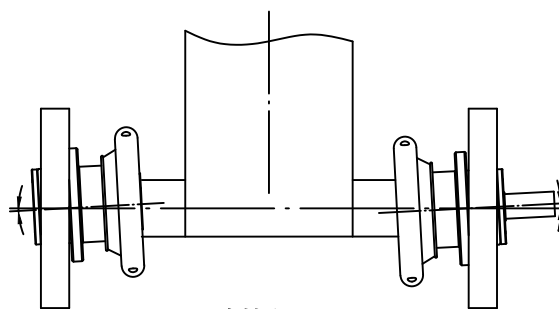
正確



錯誤



正確



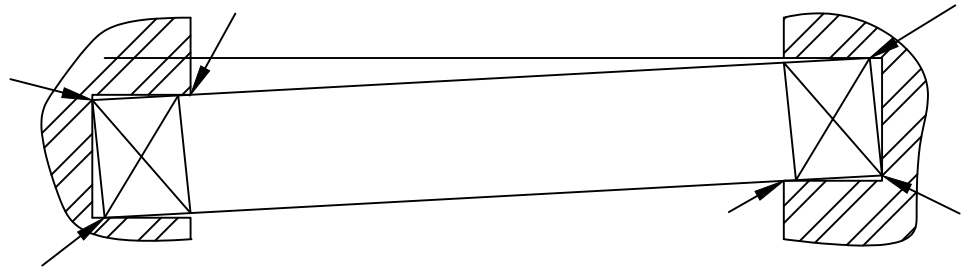
錯誤

安全夾頭

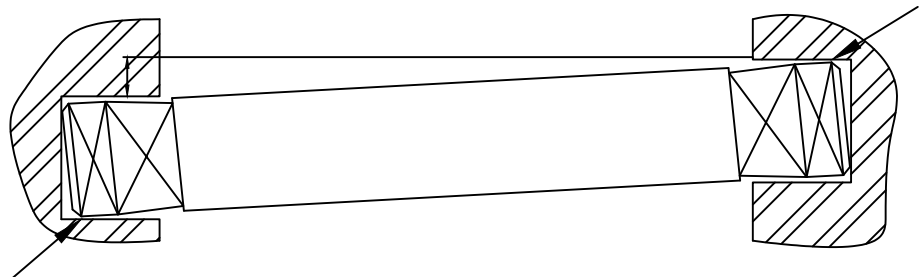
安全夾頭安裝注意事項

錯誤的安裝方式

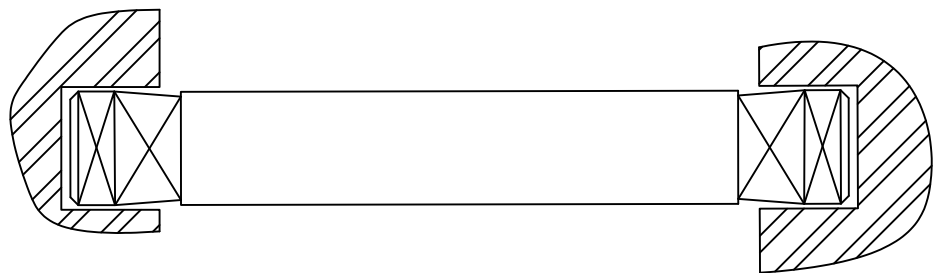
使用軸兩端未正確加工及軸未成直線排列



錯誤的安裝方式



正確的安裝方式

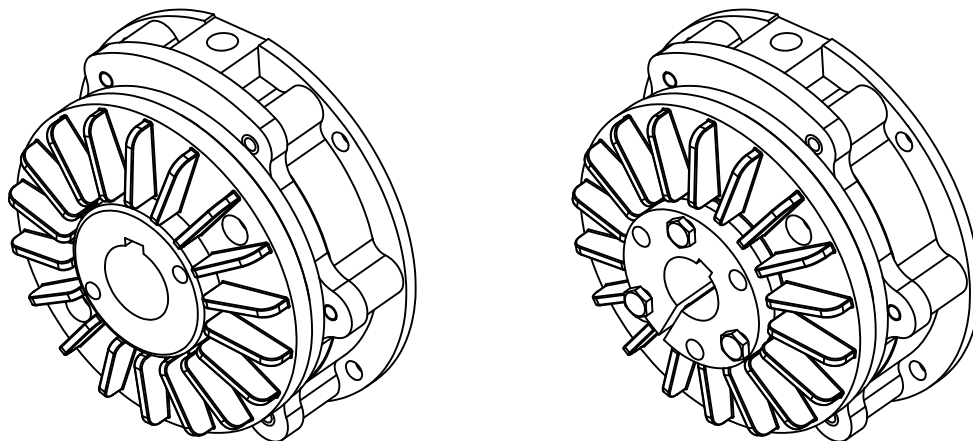


STEKI安全夾頭製造時已經保證工藝精度在誤差允許範圍內,但是安裝上請注意安裝孔的定位,確實實施軸心同心度校準。

卷軸安置後的不同心度勿超過 0.3° ,將有助於軸端與安全夾頭托口的快速安放與脫離,並保證卷軸與夾頭減少磨損妍常壽命。

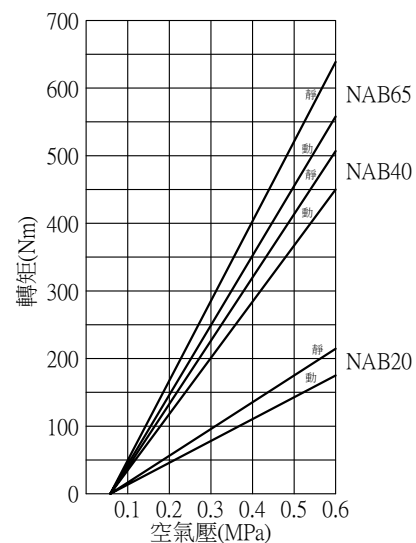
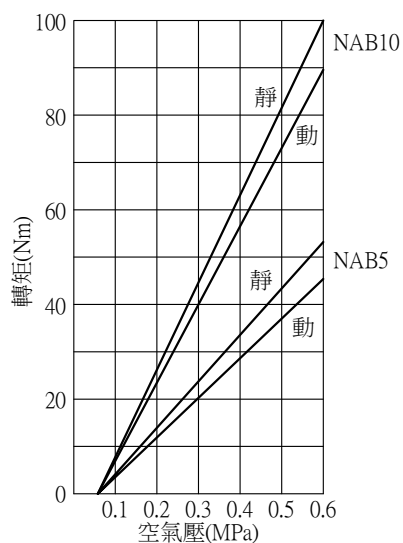
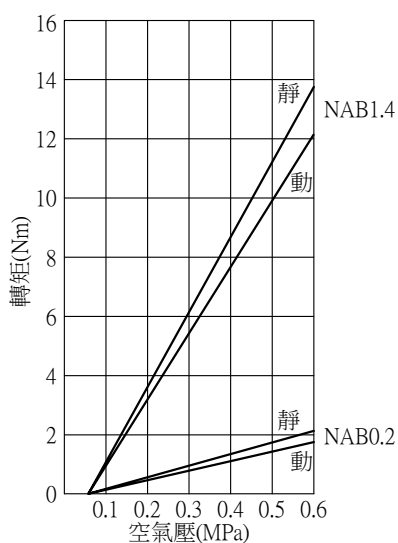
如果誤差過大,並將引起料架和整機的震動,請特別關注。

氣壓通軸式煞車器 NAB



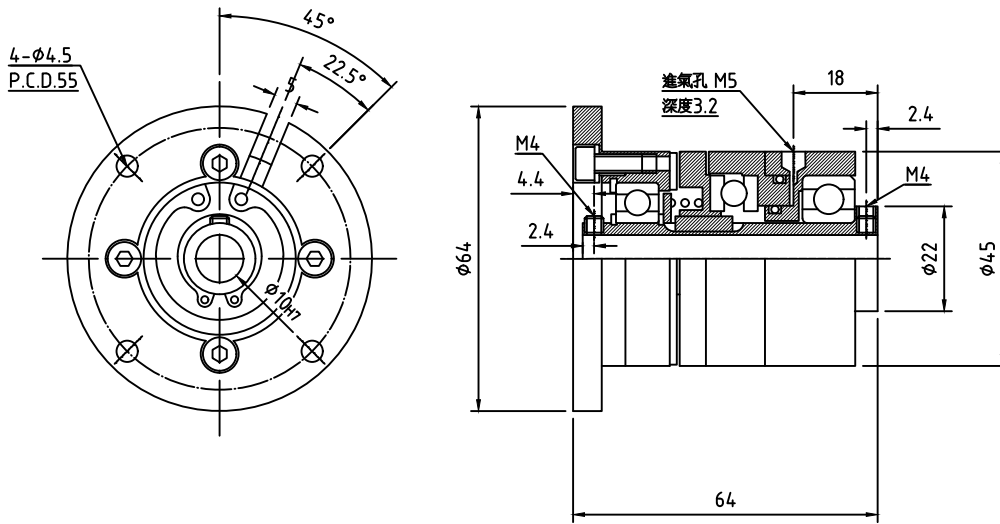
NAB							
型號	NAB-0.2	NAB-1.4	NAC-5	NAC-10	NAC-20	NAC-40	NAC-65
最大壓力	0.6 MPa	0.6 MPa	0.6 MPa	0.6 MPa	0.6 MPa	0.6 MPa	0.6 MPa
轉矩(Nm) 0.6MPa	2.2	13.7	53	100	216	510	636
最高轉速 (r/min)	1800	1800	1800	1800	1800	1800	1600
重量 (kg)	0.49	1.4	3.5	6.6	12	25	36
附件		鍵 (5×5×16)	鍵 (6×6×30)	鍵 (10×8×40)	鍵 (12×8×60)	鍵 (12×8×60)	鍵 (18×11×95)

標準轉矩特性

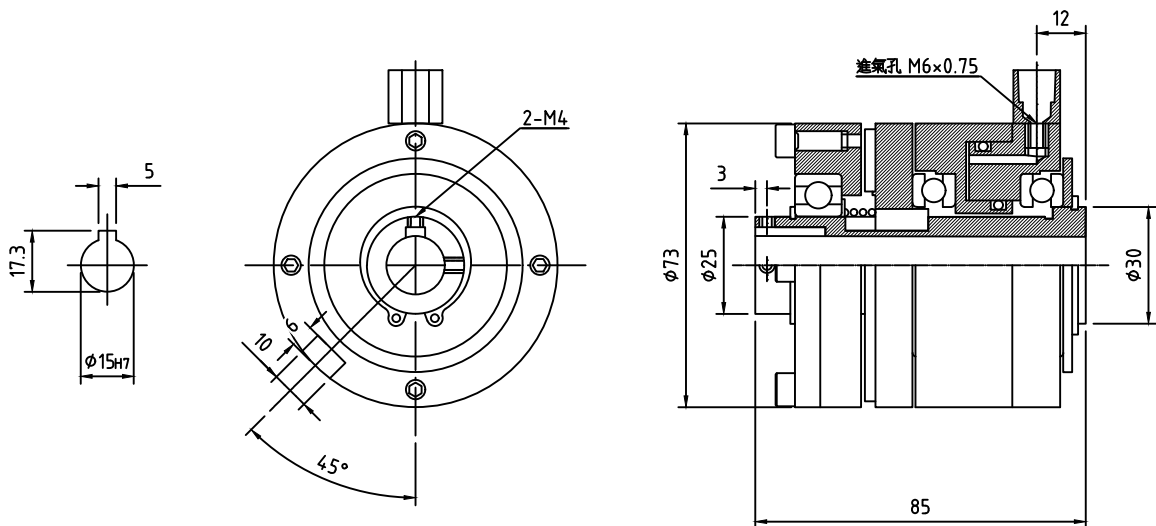


微型 NAB

NAB-0.2 尺寸規格

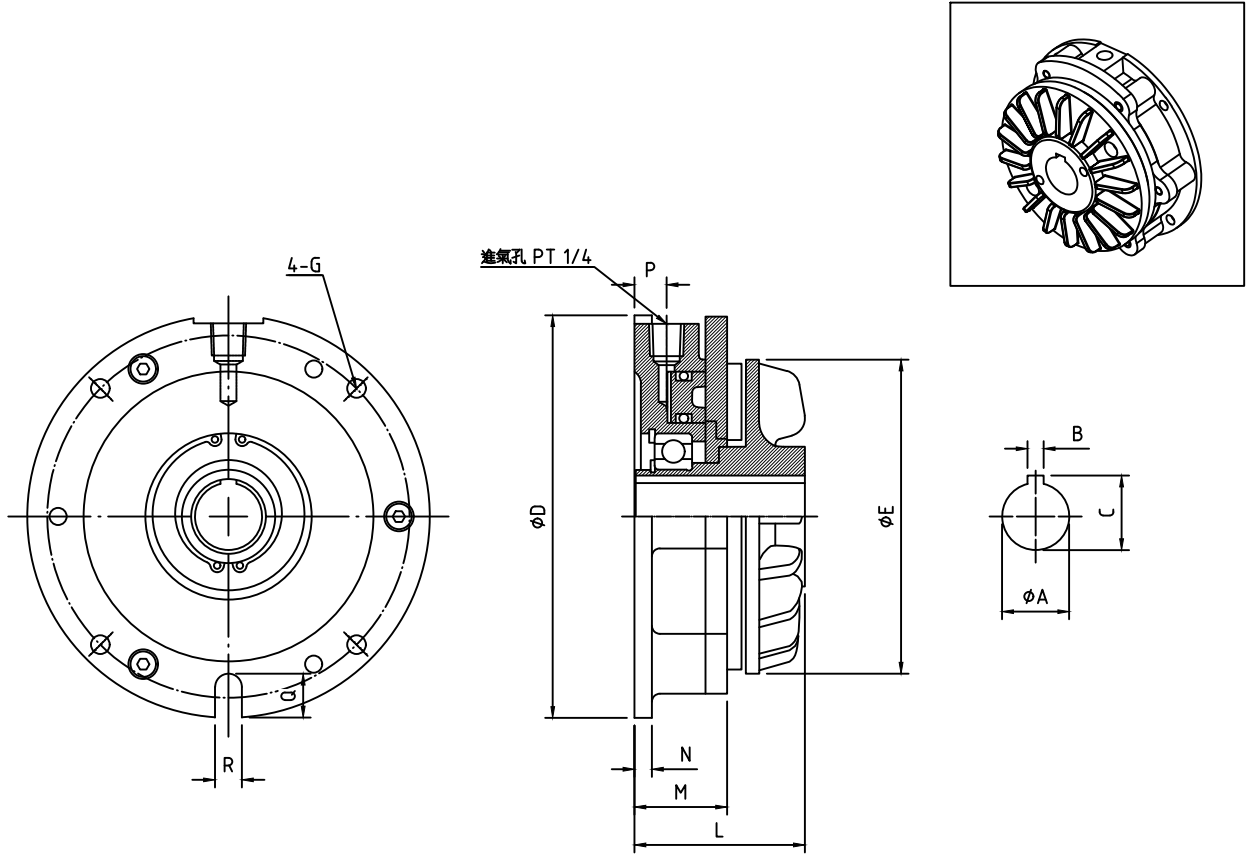


NAB-1.4 尺寸規格



NAB

NAB-5 / NAB-10 / NAB-20 / NAB-40 / NAB-65 尺寸規格

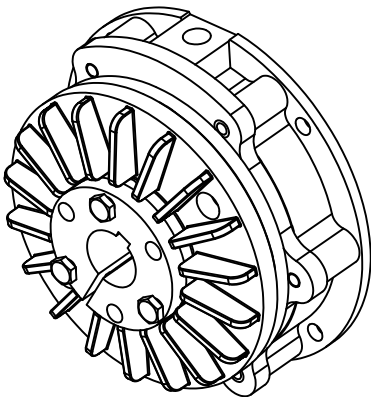
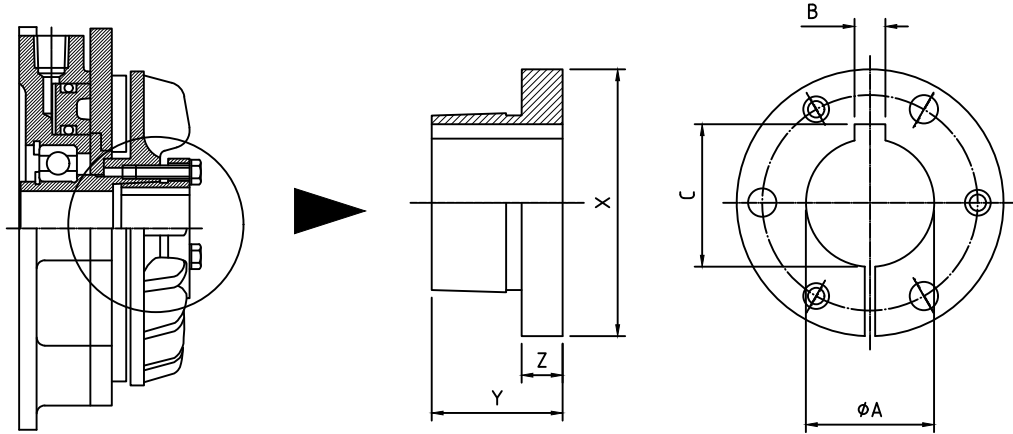


安裝尺寸表(mm)

型號	ϕA	B	C	ϕD	ϕE	4-G	L	M	N	P	Q	R
NAB-5	25	6	27.8	150	117	4- $\phi 7$ P.C.D.135	64	34.5	6.5	12	16.5	10
NAB-10	35	10	38.3	182	155	4- $\phi 9$ P.C.D.165	77	44	10	12	17	16
NAB-20	50	12	53.3	228	204	4- $\phi 9$ P.C.D.210	87	47	10	11	20	20
NAB-40	75	18	79.4	302	256	4- $\phi 14$ P.C.D.278	114	58.5	13	18	22	22
NAB-65	75	18	79.4	350	280	4- $\phi 18$ P.C.D.320	141	70	18	20	30	25

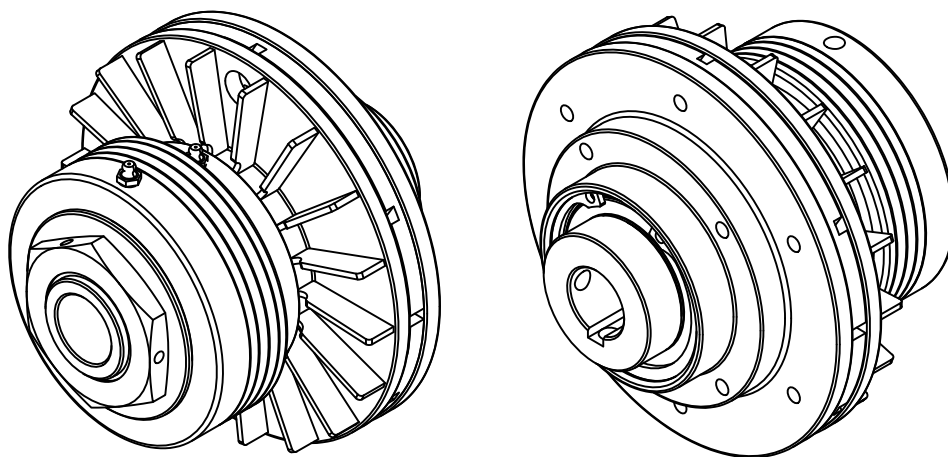
NAB軸套規格

TB軸套 尺寸規格



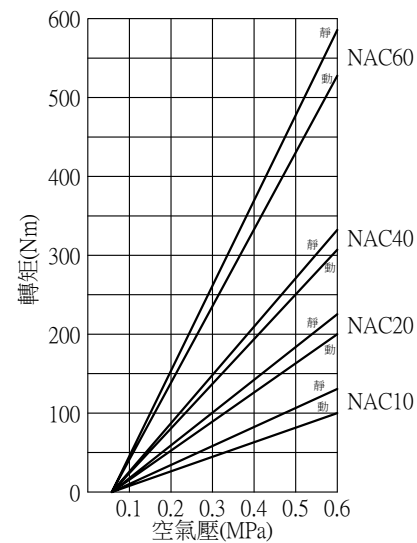
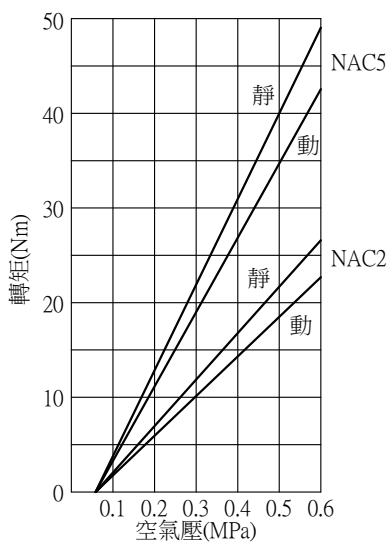
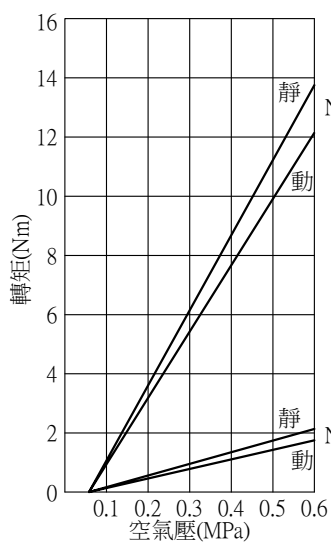
軸套尺寸表(mm)							搭配型號
型號	ϕA	B	C	X	Y	Z	
TB25-15	15	5	17.3	52	25.5	8	NAB-5
TB25-20	20	5	22.3				
TB25-25	25	6	27.8				
TB35-25	25	6	27.8	68	32	10	NAB-10
TB35-30	30	8	33.3				
TB35-35	35	10	38.3				
TB50-35	35	10	38.3	98	48	13	NAB-20
TB50-40	40	10	43.3				
TB50-50	50	12	53.3				
TB75-50	50	12	53.3	149	66	19	NAB-40 NAB-65
TB75-60	60	18	64.4				
TB75-75	75	18	79.4				

氣壓通軸式離合器 NAC



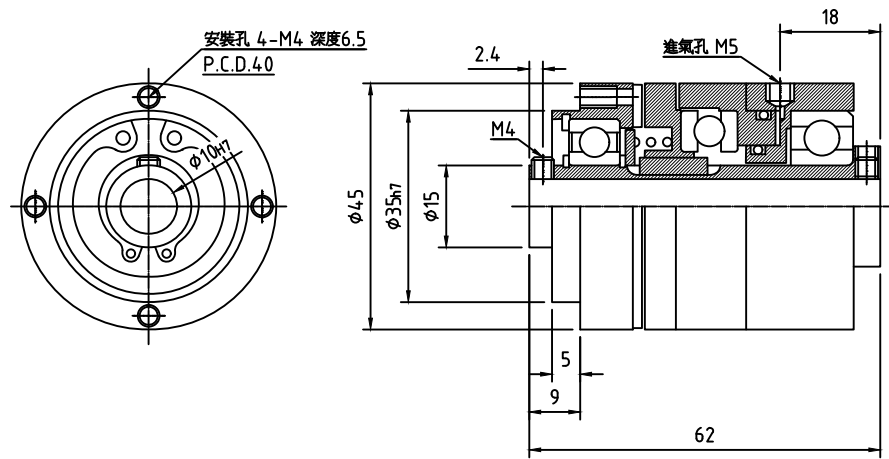
NAC								
型號	NAC-0.2	NAC-1.4	NAC-2	NAC-5	NAC-10	NAC-20	NAC-40	NAC-60
最大壓力	0.6 MPa	0.6 MPa	0.6 MPa	0.6 MPa	0.6 MPa	0.6 MPa	0.6 MPa	0.6 MPa
轉矩(Nm) 0.6MPa	2.2	13.7	26	50	100	200	330	588
最高轉速 (r/min)	3600	3600	1800	1800	1800	1700	1700	1200
重量 (kg)	0.36	1.3	2.9	5	11.8	17.8	21.8	50
附件		鍵 (5×5×16)	鍵 (5×5×25)	鍵 (6×6×30)	鍵 (10×8×40)	鍵 (12×8×60)	鍵 (12×8×60)	鍵 (18×11×95)

標準轉矩特性

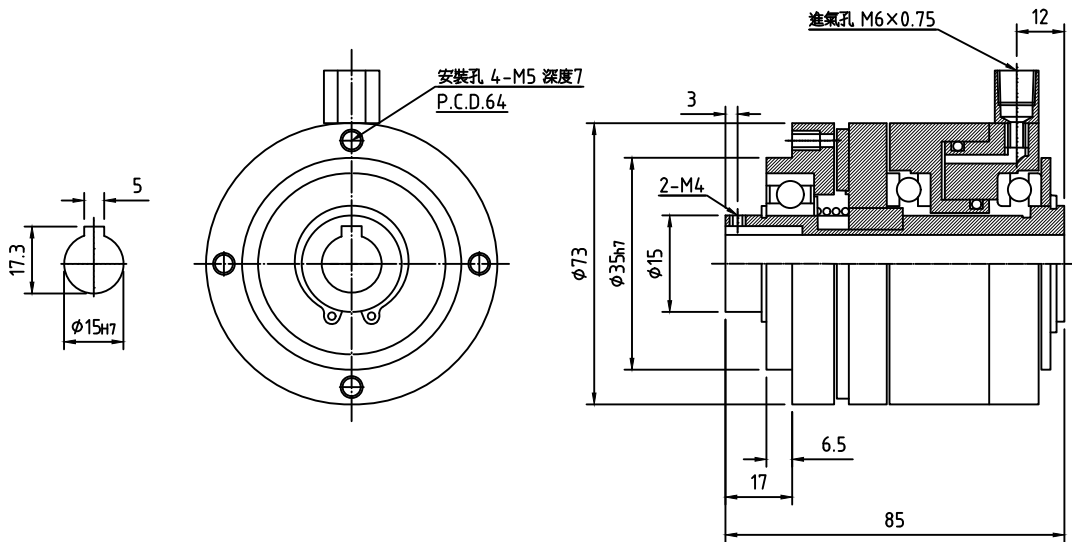


微型 NAC

NAC-0.2

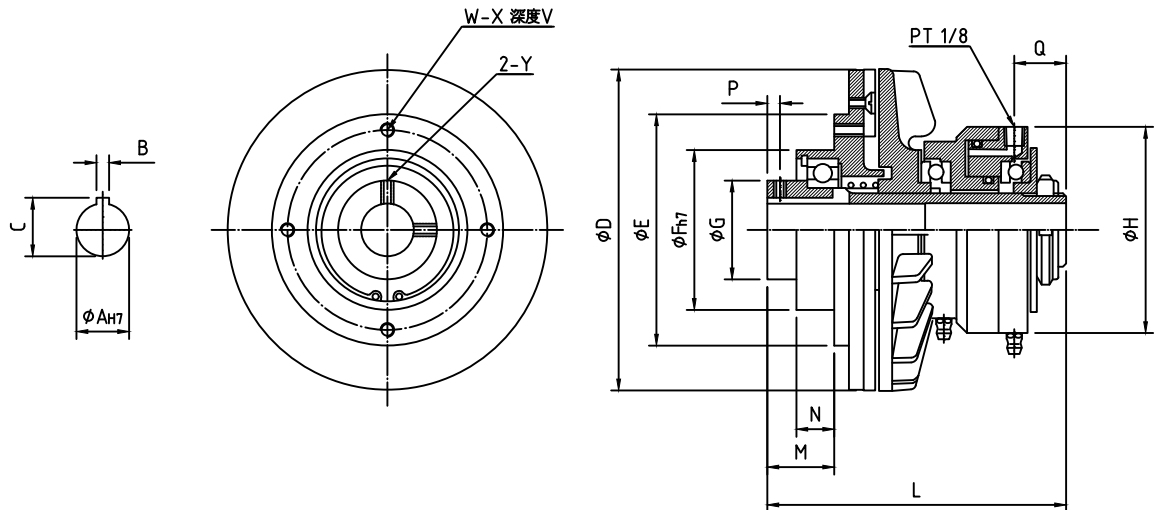


NAC-1.4



NAC

NAC-2 / NAC-5 / NAC-10 / NAC-20

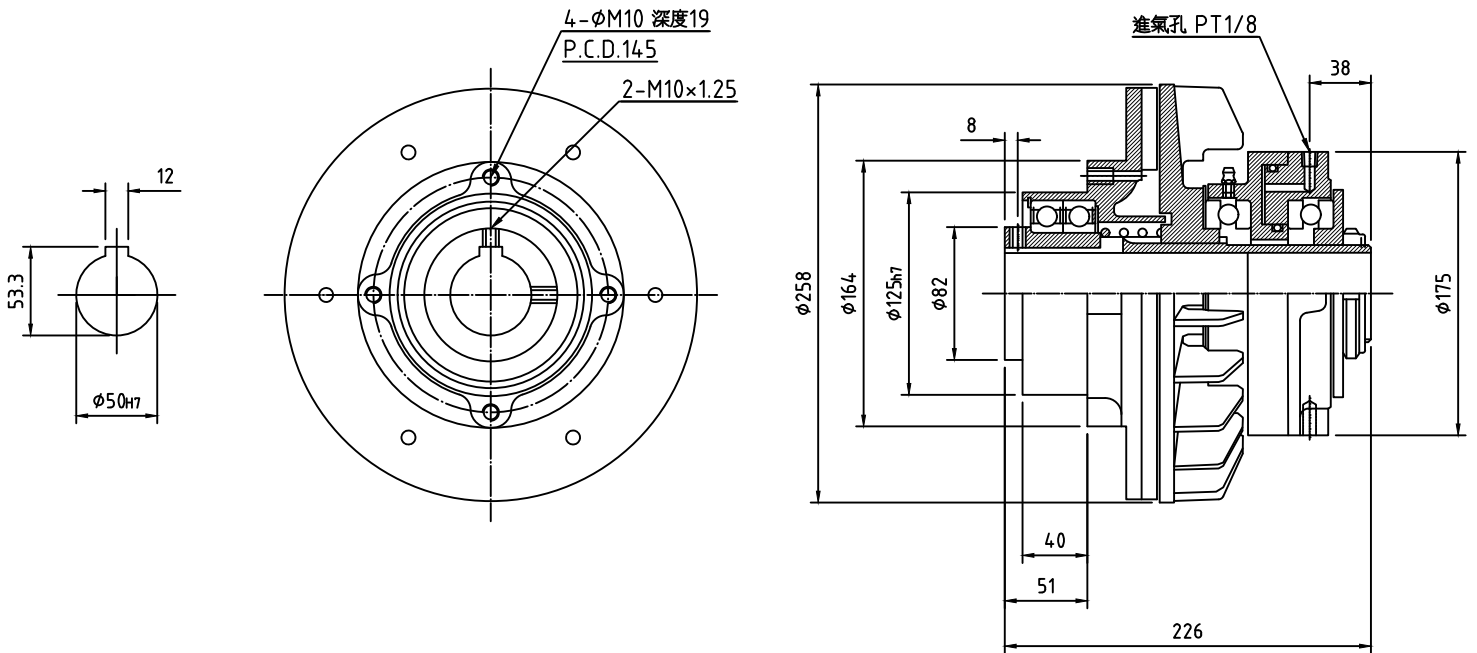


安裝尺寸表(mm)

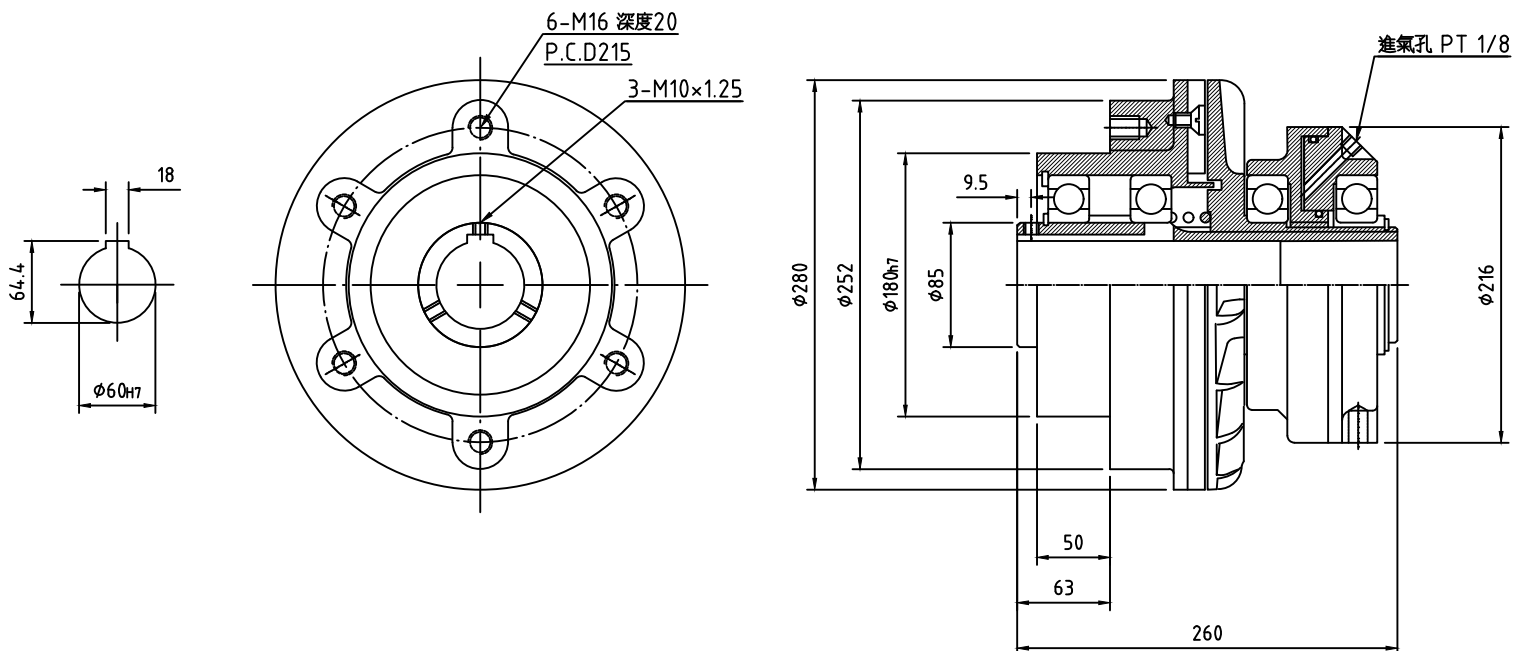
型號	ϕA_{H7}	B	C	ϕD	ϕE	ϕF_{H7}	ϕG	ϕH	L	M	N	P	Q	W-X	V	Y
NAC-2	20	5	22.3	115	90	65	35	90	120	24.5	17	5.5	18	4-M6 P.C.D.80	11	M6×0.75
NAC-5	25	6	27.8	153	110	76	47	98	142	32	18	6	24	4-M6 P.C.D.95	14	M6×0.75
NAC-10	35	10	38.3	205	140	105	67	136	185	38	22	9	30.5	4-M8 P.C.D.125	16	M10×1.25
NAC-20	40	12	44	244	150	110	70	160	196	46	32	9	25	4-M10 P.C.D.130	16	M10×1.25

NAC

NAC-40

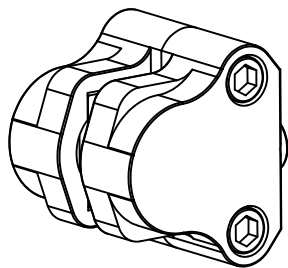


NAC-60

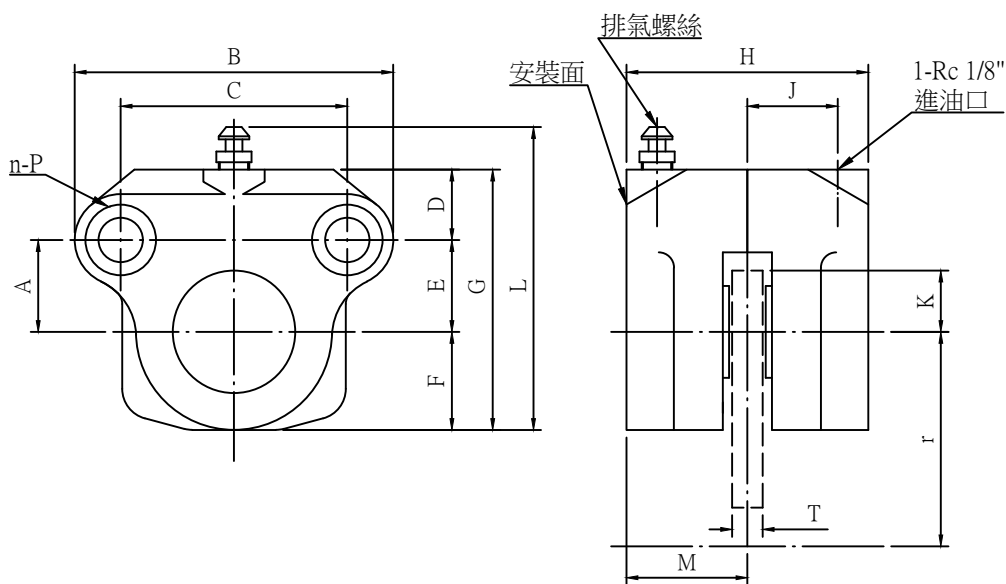
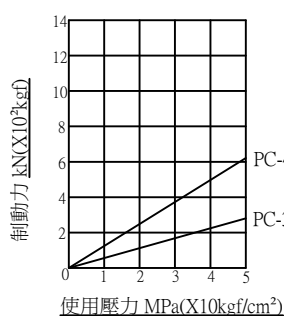


油壓碟式制動器 PC型

PC -Y Type



● 特性曲線

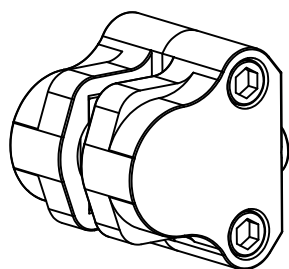


型號	A	B	C	D	E	F	G	H	J	K	L	M	n-P	T	重量
PC-300Y-01	28	79	54	18	28	24	70	68	24	12	86	34	2-M10×19	6	0.69
PC-450Y-01	30	104	74	23	30	32	85	79	29.5	18	101	39.5	2-M14×21.5	10	1.3

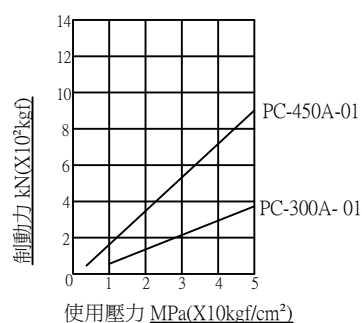
型號	PC-300Y-01	PC-450Y-01
汽缸直徑 (mm)	$\phi 30$	$\phi 45$
汽缸面積 (cm^2)	7.07	15.9
圓盤直徑 (mm)	$\phi 100 \sim \infty$	$\phi 150 \sim \infty$
有效制動半徑 (m)	$r = \frac{1}{1000} \left(\frac{\text{Disc dia}}{2} - 12 \right)$	$r = \frac{1}{1000} \left(\frac{\text{Disc dia}}{2} - 18 \right)$
摩擦片磨耗 (mm)	2	2
使用壓力 (MPa)	0.1~5	0.05~5
制動油	液壓油 or 剎車油	
必要油量 (cc)	0.9	2.9
轉矩計算(kN)	$T(\text{N} \cdot \text{m}) = \text{N} \times r$	

空壓碟式制動器 PC型

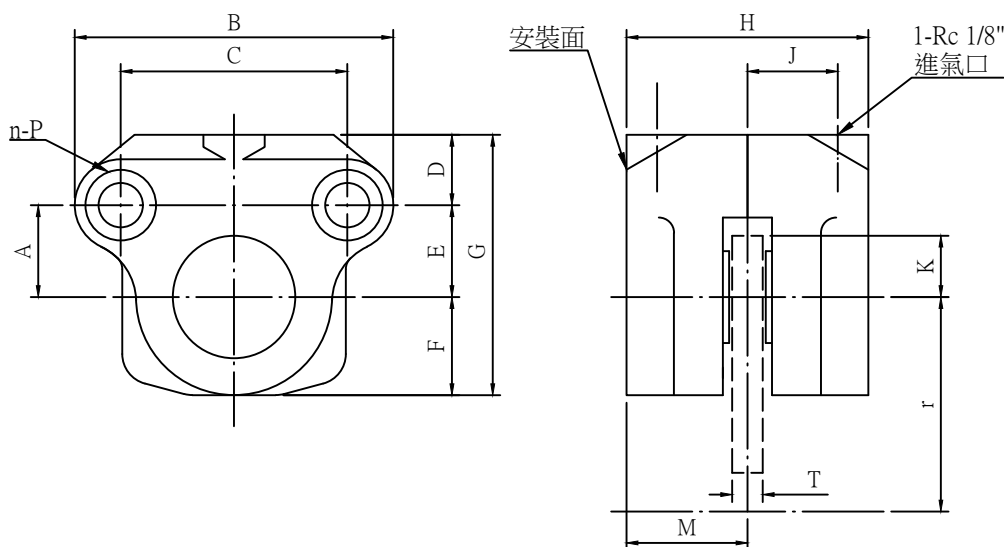
PC -A Type



• 特性曲線



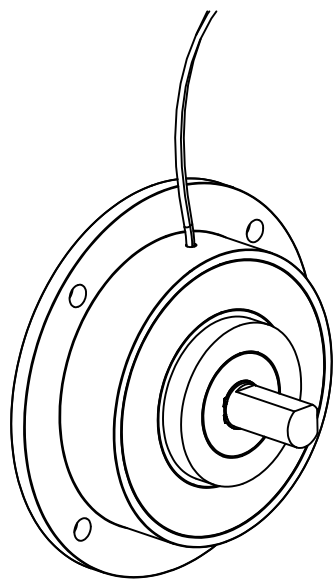
• 摩擦係數=0.4



型號	A	B	C	D	E	F	G	H	J	K	L	M	n-P	T	重量
PC-300A-01	28	79	54	18	28	24	70	68	24	12	86	34	2-M10×19	6	0.69
PC-450A-01	30	104	74	23	30	32	85	79	29.5	18	101	39.5	2-M14×21.5	10	1.3

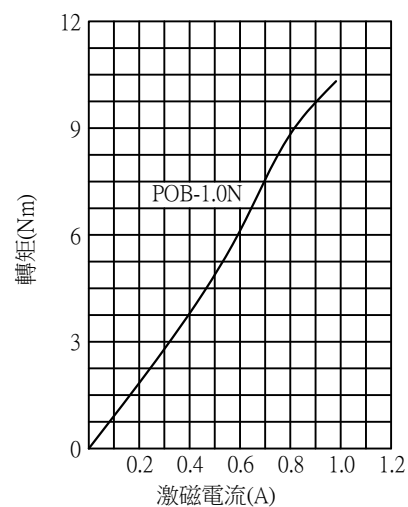
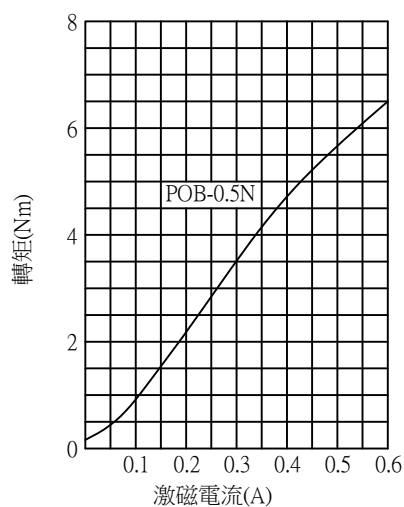
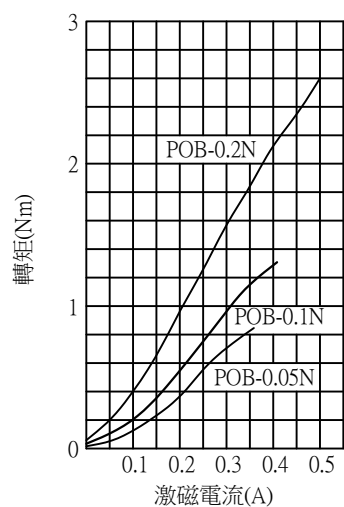
型號	PC-300Y-01	PC-450Y-01
汽缸直徑 (mm)	φ30	φ45
汽缸面積 (cm ²)	7.07	15.9
圓盤直徑 (mm)	φ100~∞	φ150~∞
有效制動半徑 (m)	$r = \frac{1}{1000} \left(\frac{\text{Disc dia}}{2} - 12 \right)$	$r = \frac{1}{1000} \left(\frac{\text{Disc dia}}{2} - 18 \right)$
摩擦片磨耗 (mm)	2	2
使用壓力 (MPa)	0.1~0.7	0.1~0.7
必要油量 (cc)	0.9	2.9
轉矩計算(kN)	T(N • m)=N x r	

磁粉式制動器 POB型



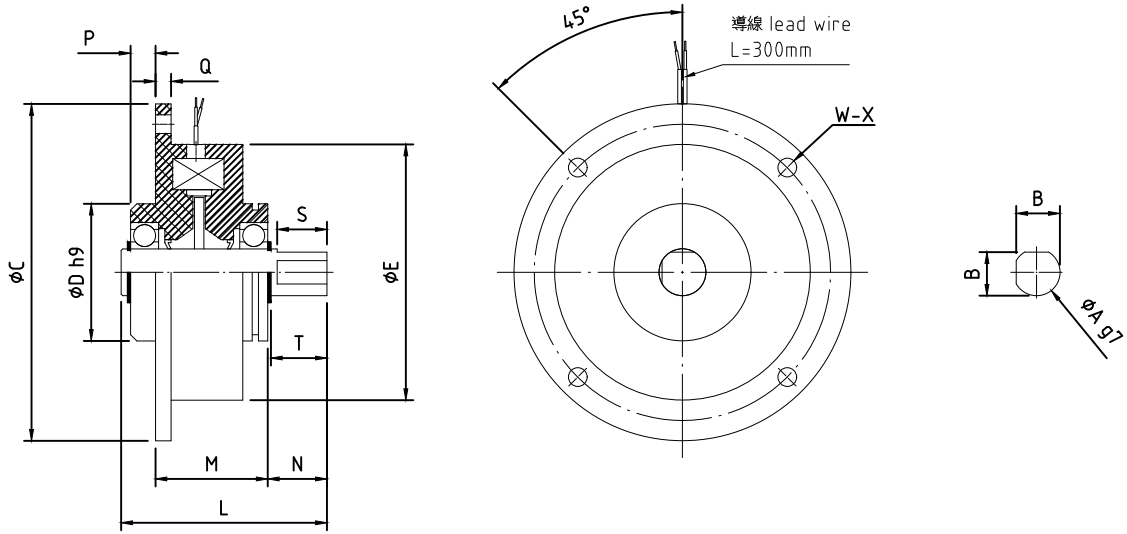
型號	定格轉矩 Nm (kgfcm)	入力容量(75°C)					空轉轉矩 (kgfcm)	滑動功率 (W)	最高回轉 速度 (r/min)	重量 (kg)
		電壓 (V)	電流 (A)	電阻 (Ω)	時定 數(S)	功率 (W)				
POB-0.05N	0.5(5)	24	0.35	68	0.02	8.4	0.25	18	1800	0.4
POB-0.1N	1(10)	24	0.42	57	0.03	10	0.5	20	1800	0.6
POB-0.2N	2(20)	24	0.5	48	0.035	12	1.00	30	1800	1
POB-0.5N	5(50)	24	0.6	40	0.045	14.4	2.5	50	1800	1.4
POB-1.0N	10(100)	24	1	24	0.09	16	5	70	1800	3

標準轉矩特性



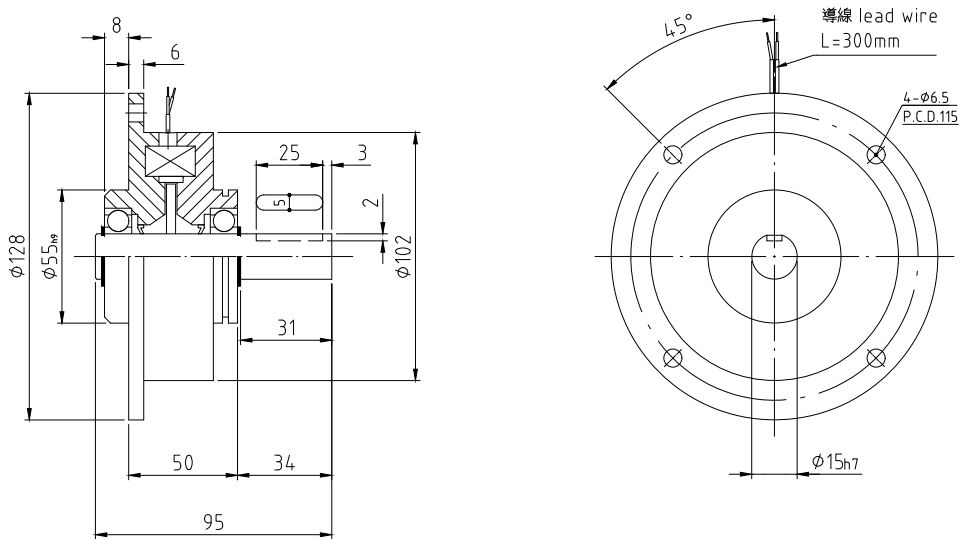
POB

POB 尺寸規格

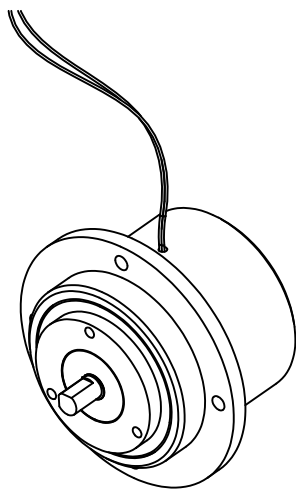


安裝尺寸表(mm)

型號	ϕA_{h7}	B	ϕC	ϕD_{h9}	ϕE	L	M	N	P	Q	S	T	W-X
POC-0.05N	5	4.5	70	24	50	45	29	11	3	4	9	10	4- $\phi 4.5$ P.C.D.60
POC-0.1N	7	6.5	76	30	56	50	30	13	4	4	10	12	4- $\phi 4.5$ P.C.D.66
POC-0.2N	9	8.5	90	40	70	59	34	16	5	5	13	15	4- $\phi 4.5$ P.C.D.80
POC-0.5N	15	14	108	44	82	66	36	19	8	5	16	18	4- $\phi 6$ P.C.D.95
POC-1.0N	請參照下圖												

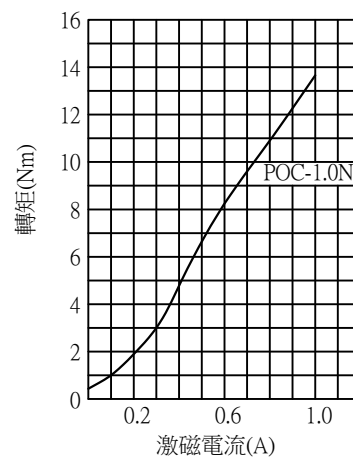
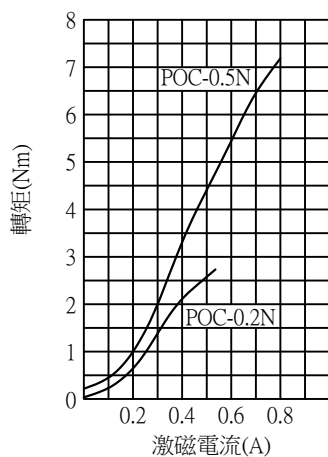
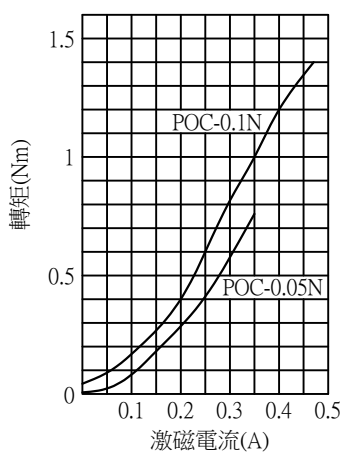


磁粉式離合器 POC



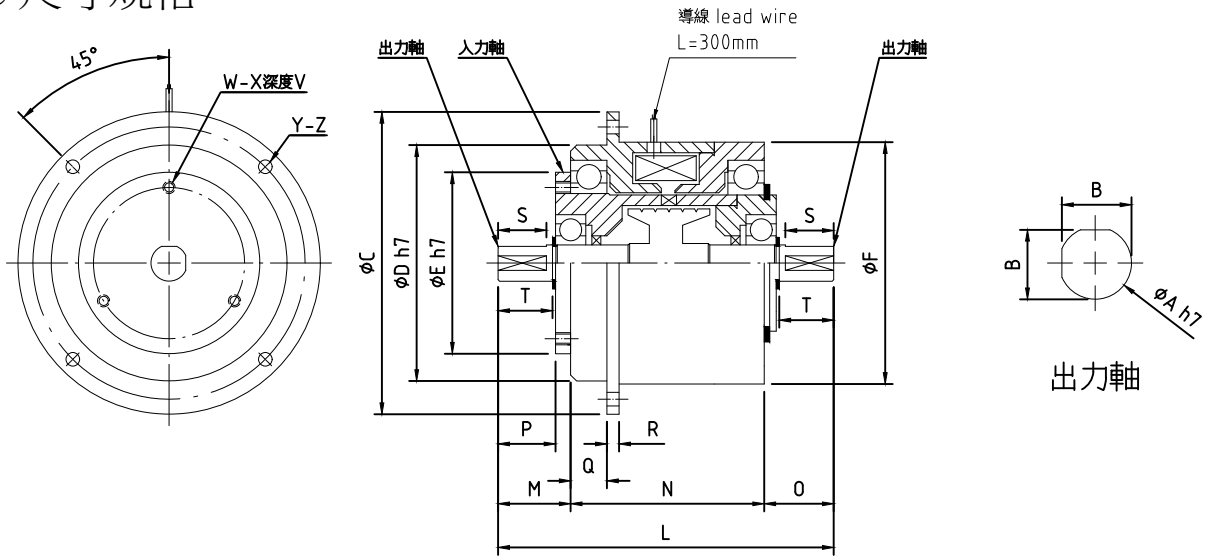
型號	定格轉矩 Nm(kgfc)	入力容量(75°C)					空轉轉矩 (kgfc)	滑動功率 (W)	最高回轉 速度 (r/min)	重量 (kg)
		電壓 (V)	電流 (A)	電阻 (Ω)	時定數 (S)	功率 (W)				
POC-0.05N	0.5(5)	24	0.35	68	0.02	8.4	0.25	30	1800	0.7
POC-0.1N	1(10)	24	0.47	51	0.03	11.5	0.5	40	1800	0.9
POC-0.2N	2(20)	24	0.55	43	0.055	13	1	50	1800	1.3
POC-0.5N	5(50)	24	0.8	30	0.055	19	2.5	60	1800	2.4
POC-1.0N	10(100)	24	1	24	0.09	24	5	100	1800	4.1

標準轉矩特性



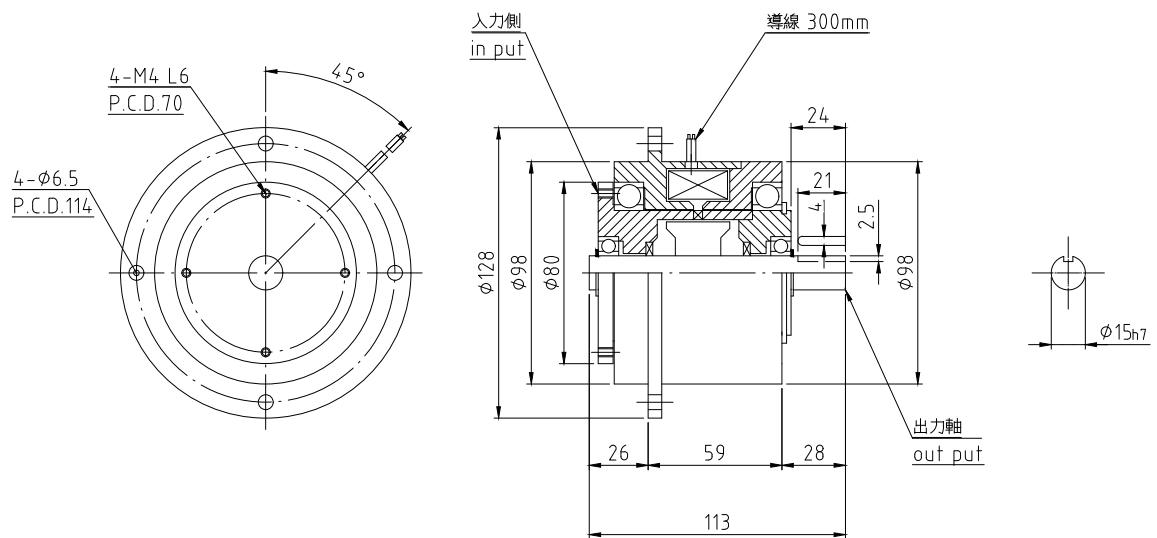
POC

POC 尺寸規格

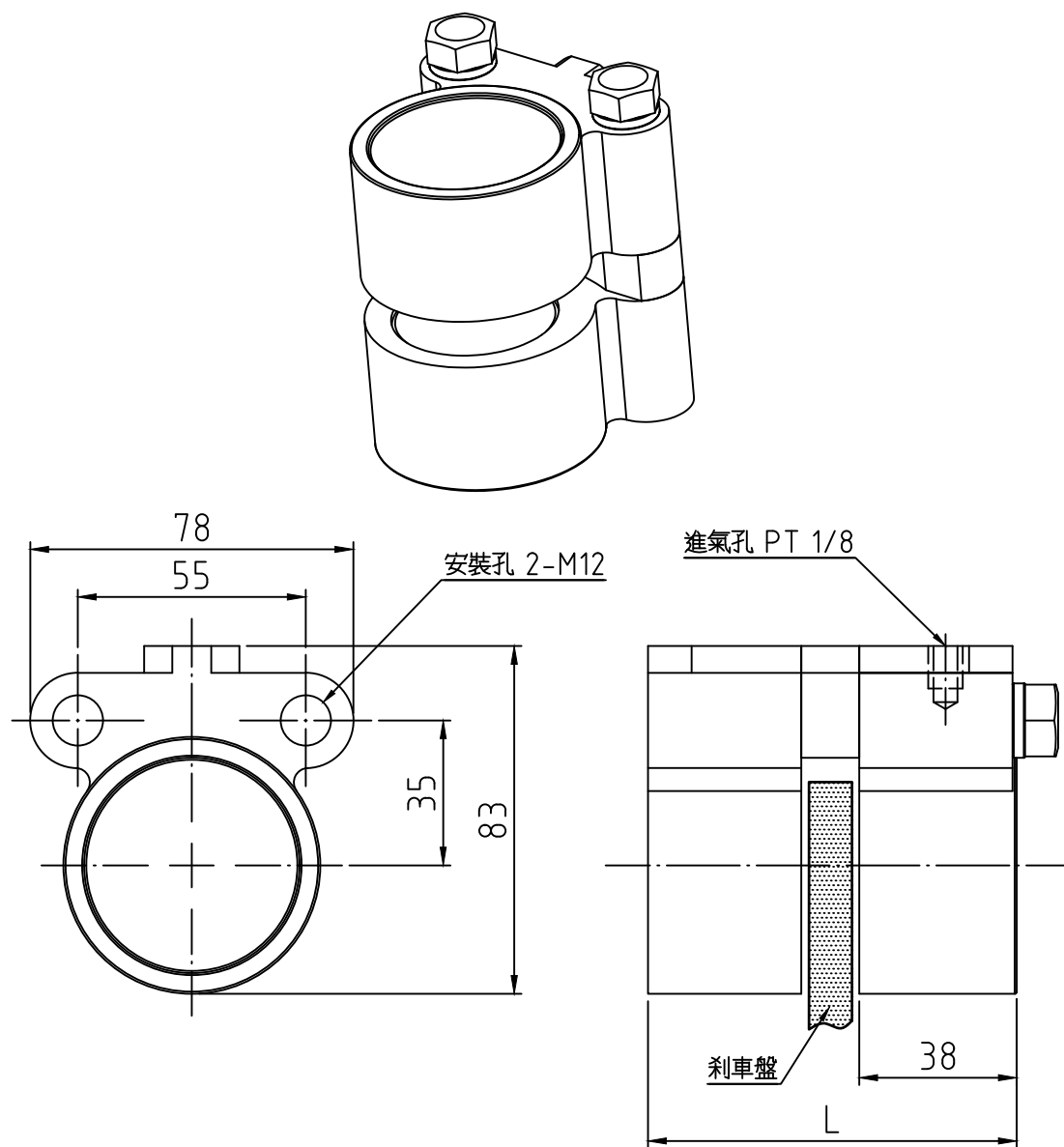


安裝尺寸表(mm)

型號	ϕA_{h7}	B	ϕC	ϕD_{h7}	ϕE_{h7}	ϕF	L	M	N	O	P	Q	R	S	T	W-X	V	Y-Z
POC-0.05N	5	4.5	70	48	40	50	77	16.5	47	13.5	5.5	8.5	4	9	10.5	3-M4 P.C.D.30	5	4- $\phi 4.5$ P.C.D.60
POC-0.1N	7	6.5	76	54	42	56	83	18.5	48.5	16	5.5	8.5	4	10	12	3-M4 P.C.D.34	5	4- $\phi 4.5$ P.C.D.66
POC-0.2N	9	8.5	85	63	48	65	95	22.5	53	19.5	6.5	9.5	4	13	15	3-M4 P.C.D.40	5	4- $\phi 4.5$ P.C.D.75
POC-0.5N	12	11.5	100	78	60	80	111	25	64	22	6	12	4	16	18	3-M4 P.C.D.50	5	4- $\phi 4.5$ P.C.D.90
POC-1.0N	請參照下圖																	



空壓碟式制動器 DBF



DBF 規格表

型 號	DBF-8	DBF-10
剎車盤厚度	8 mm	10 mm
剎車盤直徑	220 mm以上	220 mm以上
最大壓力	0.6 MPa	0.6 MPa
汽缸面積	19.63 cm ²	19.63 cm ²
摩擦係數	0.3	0.3
重量	1.4 kg	1.4 kg
L (mm)	88	90

